

LEGEND

- EXISTING GROUND CONTOUR (2 FT)
- EXISTING GROUND CONTOUR (10 FT)
- FINISHED GRADE CONTOUR (2 FT)
- FINISHED GRADE CONTOUR (10 FT)
- EXISTING TREE TO REMAIN
- EXISTING TREE TO BE REMOVED
- SEDIMENT BARRIER (PERIMETER)
- SEDIMENT BARRIER (INTERIOR)
- ORANGE CONSTRUCTION FENCE
- INLET PROTECTION
- DIVERSION DIKE & SWALE
- CONCRETE WASH AREA
- OUTLET PROTECTION
- PIPE SLOPE DRAIN
- SEDIMENT TRAP
- CHECK DAM
- ROCK FILTER BERM
- CONSTRUCTION ENTRANCE
- TEMPORARY SLOPE STABILIZATION MEASURES
- LONG TERM SLOPE STABILIZATION MEASURES
- MATting (GREENFIX STAW/COCONUT MAT TYPE: CFS072R)
- NEW IMPERVIOUS SURFACE
- DRAINAGE FLOW DIRECTION

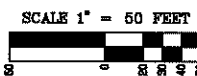
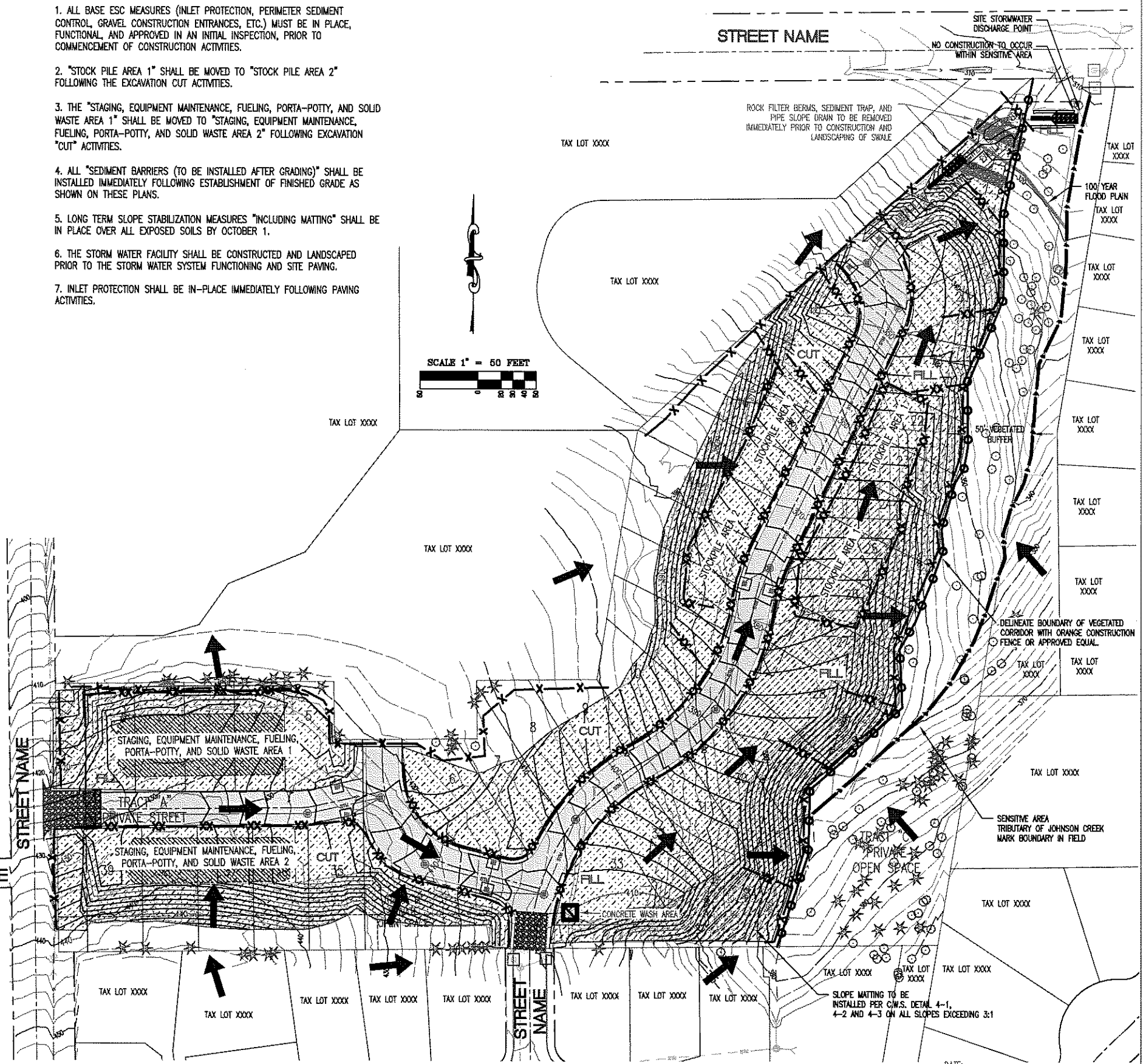
THESE EROSION AND SEDIMENT CONTROL PLANS ASSUME "DRY WEATHER" CONSTRUCTION. "WET WEATHER" CONSTRUCTION MEASURES NEED TO BE APPLIED BETWEEN OCTOBER 1ST AND MAY 31ST.

GRADING, STREET AND UTILITY EROSION AND SEDIMENT CONSTRUCTION NOTES:

1. SEED USED FOR TEMPORARY OR PERMANENT SEEDING SHALL BE COMPOSED OF ONE OF THE FOLLOWING MIXTURES, UNLESS OTHERWISE AUTHORIZED:
 - A. DWARF GRASS MIX (MIN. 100 LB./AC.)
 1. DWARF PERENNIAL RYEGRASS (80% BY WEIGHT)
 2. CREEPING RED FESCUE (20% BY WEIGHT)
 - B. STANDARD HEIGHT GRASS MIX (MIN. 100LB./AC.)
 1. ANNUAL RYEGRASS (40% BY WEIGHT)
 2. TURF-TYPE FESCUE (60% BY WEIGHT)
2. SLOPE TO RECEIVE TEMPORARY OR PERMANENT SEEDING SHALL HAVE THE SURFACE ROUGHENED BY MEANS OF TRACK-WALKING OR THE USE OF OTHER APPROVED IMPLEMENTS. SURFACE ROUGHENING IMPROVES SEED BEDDING AND REDUCES RUN-OFF VELOCITY.
3. LONG TERM SLOPE STABILIZATION MEASURES SHALL INCLUDE THE ESTABLISHMENT OF PERMANENT VEGETATIVE COVER VIA SEEDING WITH APPROVED MIX AND APPLICATION RATE.
4. TEMPORARY SLOPE STABILIZATION MEASURES SHALL INCLUDE: COVERING EXPOSED SOIL WITH PLASTIC SHEETING, STRAW MULCHING, WOOD CHIPS, OR OTHER APPROVED MEASURES.
5. STOCKPILED SOIL OR STRIPPINGS SHALL BE PLACED IN A STABLE LOCATION AND CONFIGURATION. DURING "WET WEATHER" PERIODS, STOCKPILES SHALL BE COVERED WITH PLASTIC SHEETING OR STRAW MULCH. SEDIMENT FENCE IS REQUIRED AROUND THE PERIMETER OF THE STOCKPILE.
6. EXPOSED CUT OR FILL AREAS SHALL BE STABILIZED THROUGH THE USE OF TEMPORARY SEEDING AND MULCHING, EROSION CONTROL BLANKETS OR MATS, MID-SLOPE SEDIMENT FENCES OR WATTLES, OR OTHER APPROPRIATE MEASURES. SLOPES EXCEEDING 25% MAY REQUIRE ADDITIONAL EROSION CONTROL MEASURES.
7. AREAS SUBJECT TO WIND EROSION SHALL USE APPROPRIATE DUST CONTROL MEASURES INCLUDING THE APPLICATION OF A FINE SPRAY OF WATER, PLASTIC SHEETING, STRAW MULCHING, OR OTHER APPROVED MEASURES.
8. CONSTRUCTION ENTRANCES SHALL BE INSTALLED AT THE BEGINNING OF CONSTRUCTION AND MAINTAINED FOR THE DURATION OF THE PROJECT. ADDITIONAL MEASURES INCLUDING, BUT NOT LIMITED TO, TIRE WASHES, STREET SWEEPING, AND VACUUMING MAY BE REQUIRED TO INSURE THAT ALL PAVED AREAS ARE KEPT CLEAN FOR THE DURATION OF THE PROJECT.
9. ACTIVE INLETS TO STORM WATER SYSTEMS SHALL BE PROTECTED THROUGH THE USE OF APPROVED INLET PROTECTION MEASURES. ALL INLET PROTECTION MEASURES ARE TO BE REGULARLY INSPECTED AND MAINTAINED AS NEEDED.
10. SATURATED MATERIALS THAT ARE HAULED OFF-SITE MUST BE TRANSPORTED IN WATER-TIGHT TRUCKS TO ELIMINATE SPILLAGE OF SEDIMENT AND SEDIMENT-LADEN WATER.
11. AN AREA SHALL BE PROVIDED FOR THE WASHING OUT OF CONCRETE TRUCKS IN A LOCATION THAT DOES NOT PROVIDE RUN-OFF THAT CAN ENTER THE STORM WATER SYSTEM. IF THE CONCRETE WASH-OUT AREA CAN NOT BE CONSTRUCTED GREATER THAN 50' FROM ANY DISCHARGE POINT, SECONDARY MEASURES SUCH AS BERMS OR TEMPORARY SETTLING PITS MAY BE REQUIRED. THE WASH-OUT SHALL BE LOCATED WITHIN SIX FEET OF TRUCK ACCESS AND BE CLEANED WHEN IT REACHES 50% OF THE CAPACITY.
12. SWEEPINGS FROM EXPOSED AGGREGATE CONCRETE SHALL NOT BE TRANSFERRED TO THE STORM WATER SYSTEM. SWEEPINGS SHALL BE PICKED UP AND DISPOSED IN THE TRASH.
13. AVOID PAVING IN WET WEATHER WHEN PAVING CHEMICALS CAN RUN-OFF INTO THE STORM WATER SYSTEM.
14. USE BMPs SUCH AS CHECK-DAMS, BERMS, AND INLET PROTECTION TO PREVENT RUN-OFF FROM REACHING DISCHARGE POINTS.
15. COVER CATCH BASINS, MANHOLES, AND OTHER DISCHARGE POINTS WHEN APPLYING SEAL COAT, TACK COAT, ETC. TO PREVENT INTRODUCING THESE MATERIALS TO THE STORM WATER SYSTEM.

EROSION AND SEDIMENT CONTROL BMP IMPLEMENTATION:

1. ALL BASE ESC MEASURES (INLET PROTECTION, PERIMETER SEDIMENT CONTROL, GRAVEL CONSTRUCTION ENTRANCES, ETC.) MUST BE IN PLACE, FUNCTIONAL, AND APPROVED IN AN INITIAL INSPECTION, PRIOR TO COMMENCEMENT OF CONSTRUCTION ACTIVITIES.
2. "STOCK PILE AREA 1" SHALL BE MOVED TO "STOCK PILE AREA 2" FOLLOWING THE EXCAVATION CUT ACTIVITIES.
3. THE "STAGING, EQUIPMENT MAINTENANCE, FUELING, PORTA-POTTY, AND SOLID WASTE AREA 1" SHALL BE MOVED TO "STAGING, EQUIPMENT MAINTENANCE, FUELING, PORTA-POTTY, AND SOLID WASTE AREA 2" FOLLOWING EXCAVATION "CUT" ACTIVITIES.
4. ALL "SEDIMENT BARRIERS (TO BE INSTALLED AFTER GRADING)" SHALL BE INSTALLED IMMEDIATELY FOLLOWING ESTABLISHMENT OF FINISHED GRADE AS SHOWN ON THESE PLANS.
5. LONG TERM SLOPE STABILIZATION MEASURES "INCLUDING MATTING" SHALL BE IN PLACE OVER ALL EXPOSED SOILS BY OCTOBER 1.
6. THE STORM WATER FACILITY SHALL BE CONSTRUCTED AND LANDSCAPED PRIOR TO THE STORM WATER SYSTEM FUNCTIONING AND SITE PAVING.
7. INLET PROTECTION SHALL BE IN-PLACE IMMEDIATELY FOLLOWING PAVING ACTIVITIES.



REVISIONS:

GRADING, STREET, AND UTILITY CONSTRUCTION EROSION AND SEDIMENT CONTROL PLAN

ENGINEERING · PLANNING SURVEYING · FORESTRY
 LICENSED IN OR, WA & AK
ENGINEERING FIRM
 13910 SW GALEBORO ST. SHERWOOD, OR 97139
 PHONE: (503) 925-8799 FAX: (503) 925-8969
 www.efs-eng.com

DESIGNED BY: AHH DRAWING NO.: ESC3-052
 DRAWN BY: DJM SCALE: AS NOTED
 CHECKED BY: AHH
 PREPARED FOR: CLEAN WATER SERVICES
 2550 SW HILLSBORO HIGHWAY HILLSBORO, OR 97123
 PHONE: 503-681-3600 FAX: 503-681-3603

PROJECT NAME
WASHINGTON COUNTY OREGON
 WASHINGTON COUNTY TAX MAP

THIS IS A PLACE HOLDER
 PRELIMINARY DESIGN
 REMOVE FOR STAMPING
 JOB NUMBER 1527
 SHEET ESC-052