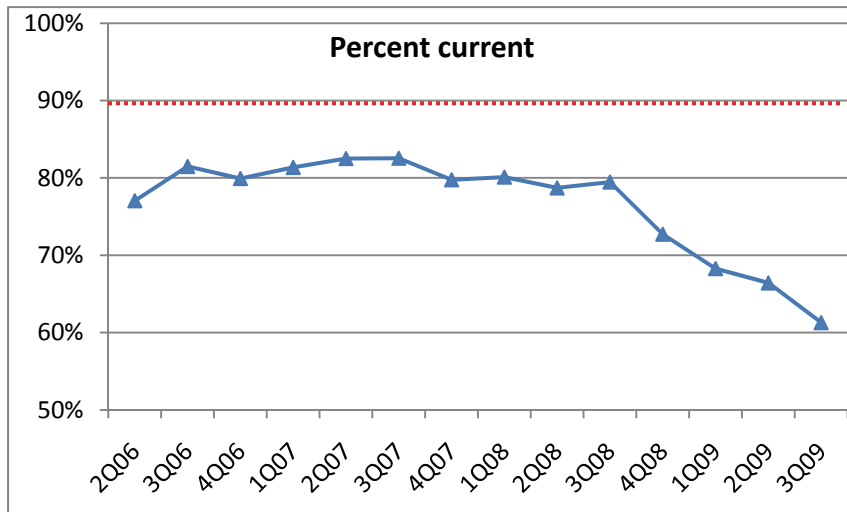


High Priority Outcome #1: DEQ delivers on its Blue Ribbon Committee commitments to improve the Water Quality Permit Program.

This report covers the period July 1 through September 30, 2009.

1. Ensure that 90% of the individual NPDES and WPCF permits (excluding onsite) are current.
BRC Accountability, Recommendation #1.



	2Q06	3Q06	4Q06	1Q07	2Q07	3Q07	4Q07	1Q08	2Q08	3Q08	4Q08	1Q09	2Q09	3Q09
Total number of permits	366	551	533	542	543	573	573	573	573	560	561	558	557	558
Number current	282	449	426	441	448	473	457	459	451	445	408	381	370	342
Percent current	77%	81%	80%	81%	83%	83%	80%	80%	79%	79%	73%	68%	66%	61%

from SIS Database		# Active	# Current	% Current
3Q07 (10/15/07)	NPDES Major	77	52	68%
	NPDES Minor	305	255	84%
	WPCF	191	169	88%
4Q07 (1/2/08)	NPDES Major	76	73	57%
	NPDES Minor	307	243	79%
	WPCF	190	171	90%
1Q08 (5/13/08)	NPDES Major	75	43	57%
	NPDES Minor	308	239	78%
	WPCF	190	177	93%
2Q08 (8/6/08)	NPDES Major	75	43	57%
	NPDES Minor	308	233	76%
	WPCF	190	174	92%
3Q08 (11/25/08)	NPDES Major	74	40	54%
	NPDES Minor	305	222	73%
	WPCF	189	172	91%
4Q08 (12/29/08)	NPDES Major	74	40	54%
	NPDES Minor	305	216	71%
	WPCF	189	174	92%
1Q09 (3/31/09)	NPDES Major	74	26	35%
	NPDES Minor	303	190	63%
	WPCF	189	170	90%
2Q09 (6/30/09)	NPDES Major	74	22	30%
	NPDES Minor	301	171	57%
	WPCF	189	171	90%
3Q09 (9/30/09)	NPDES Major	74	21	28%
	NPDES Minor	301	161	53%
	WPCF	189	168	89%

2. Ensure 95% of the permits are issued on the watershed cycle by 2010.
BRC Accountability, Recommendation #1

Due to the delay in issuing permits during 2008-2009, DEQ will not be able to issue 95% of the permits on a watershed cycle by 2010. Once key litigation and the issues surrounding Oregon's bacteria standard are resolved, DEQ will provide a new time frame for meeting this commitment.

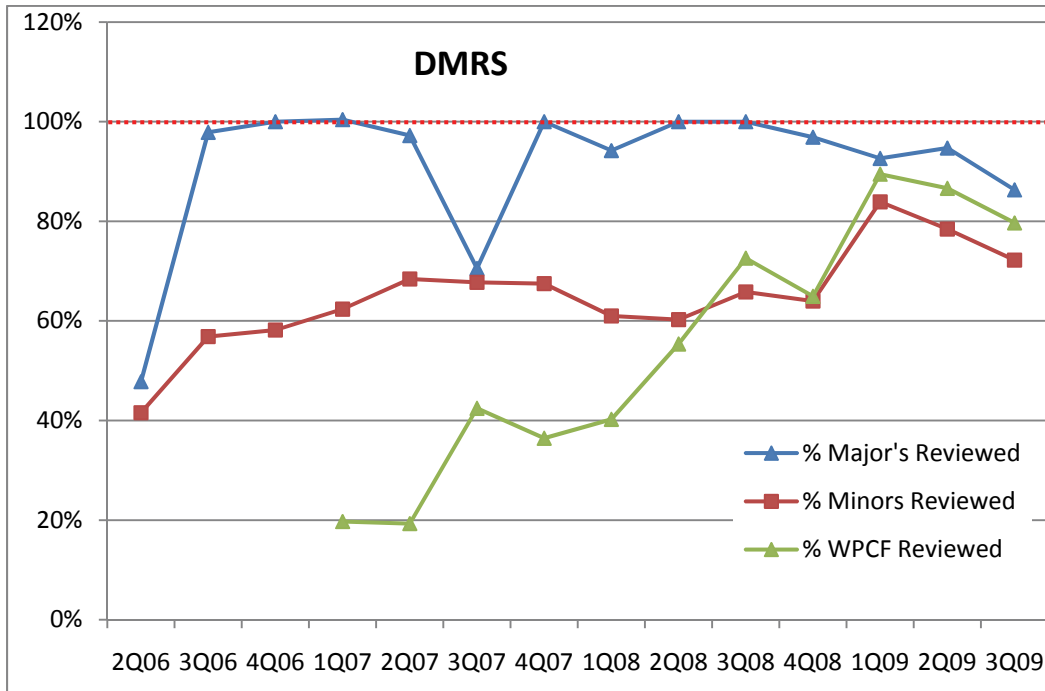
3. Inspect 100% of permits (majors, minors and WPCF) within targeted basins.
BRC Accountability, Recommendation #1

DEQ inspects 50% of all NPDES major facilities each year, as well as non-major facilities that are coming up for renewal. The non-major facilities are part of DEQ's watershed permit issuance plan and are typically inspected one to two years before permit renewal in order to prepare for permit renewal by assessing compliance and discussing information that will be needed during the renewal process.

		Inspections to be completed this calendar year	Inspections completed as of end of quarter	Percent inspections completed to date
2Q06		207	94	45%
3Q06		208	179	86%
4Q06		196	292	149%
1Q07	Maj/ Min NPDES, WPCF	136	32	24%
	NPDES Gen	12	7	58%
2Q07	Maj/Min NPDES, WPCF	151	80	53%
	NPDES Gen	30	27	90%
3Q07	Maj/Min NPDES, WPCF	151	113	75%
	NPDES Gen	36	72	200%
4Q07	Maj/Min NPDES, WPCF	148	147	99%
	NPDES Gen	0	28	#DIV/0!
1Q08	NPDES Major	46	1	2%
	NPDES Minor	48	12	25%
	NPDES Gen	0	2	#DIV/0!
	NPDES – Stormwater	77	19	25%
	WPCF	29	14	48%
2Q08	NPDES Major	45	17	38%
	NPDES Minor	52	39	75%
	NPDES Gen	0	5	#DIV/0!
	NPDES – Stormwater	77	41	53%
	WPCF	18	18	100%
3Q08	NPDES Major	45	32	71%
	NPDES Minor	52	52	100%
	NPDES Gen	0	6	#DIV/0!
	NPDES – Stormwater	0	16	#DIV/0!
	WPCF	18	41	228%
4Q08	NPDES Major	45	40	89%
	NPDES Minor	52	71	137%
	NPDES Gen	0	14	#DIV/0!
	NPDES – Stormwater	0	88	#DIV/0!
	WPCF	18	51	283%
1Q09	NPDES Major	26	9	35%
	NPDES Minor	47	19	40%
	NPDES Gen	22	10	45%
	NPDES – Stormwater	53	43	81%
	WPCF	19	11	58%
2Q09	NPDES Major	26	23	88%
	NPDES Minor	47	35	74%
	NPDES Gen	0	4	#DIV/0!
	NPDES – Stormwater	105	79	75%
	WPCF	19	26	137%
3Q09	NPDES Major	26	39	150%
	NPDES Minor	47	61	130%
	NPDES Gen	0	7	#DIV/0!
	NPDES – Stormwater	90	88	98%
	WPCF	19	35	184%

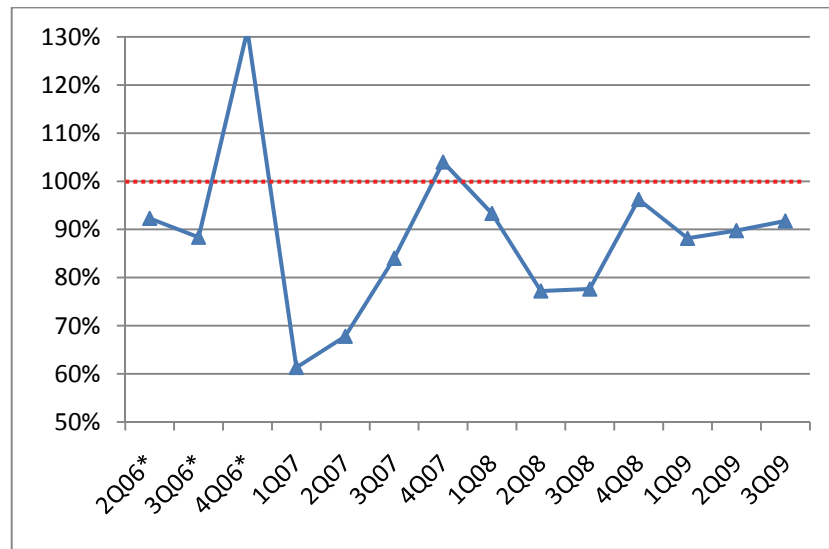
4. Review 100% of monthly DMRs (majors, minors and WPCF) within 30 days of receipt (*placeholder until DMS becomes active*)
BRC Accountability, Recommendation #1

Commitment to review DMRs within 30 days of receipt is for majors only until e-DMR is available.



	2Q06	3Q06	4Q06	1Q07	2Q07	3Q07	4Q07	1Q08	2Q08	3Q08	4Q08	1Q09	2Q09	3Q09
Majors received	203	188	225	238	216	173	225	224	227	224	225	217	227	241
# Reviewed	97	184	225	239	210	122	225	211	227	224	218	201	215	208
% Major's Reviewed	48%	98%	100%	100%	97%	71%	100%	94%	100%	100%	97%	93%	95%	86%
Minors received	1215	2132	1255	728	725	648	578	759	702	778	733	869	691	889
# Reviewed	505	1212	730	454	496	439	390	463	423	512	469	729	542	642
% Minors Reviewed	42%	57%	58%	62%	68%	68%	67%	61%	60%	66%	64%	84%	78%	72%
WPCF received	--	--	--	563	523	245	236	338	289	303	328	446	299	374
# Reviewed	--	--	--	111	101	104	86	136	160	220	213	399	259	298
% WPCF Reviewed	--	--	--	20%	19%	42%	36%	40%	55%	73%	65%	89%	87%	80%

5. Number of new General Permit Applications received this quarter (minus 1200-C permits administered by agents and onsite permits) and percent of General Permits assigned within 30 days of receipt of application or in the case of stormwater, after public notice. Target = 100%.
BRC Accountability Recommendation #1



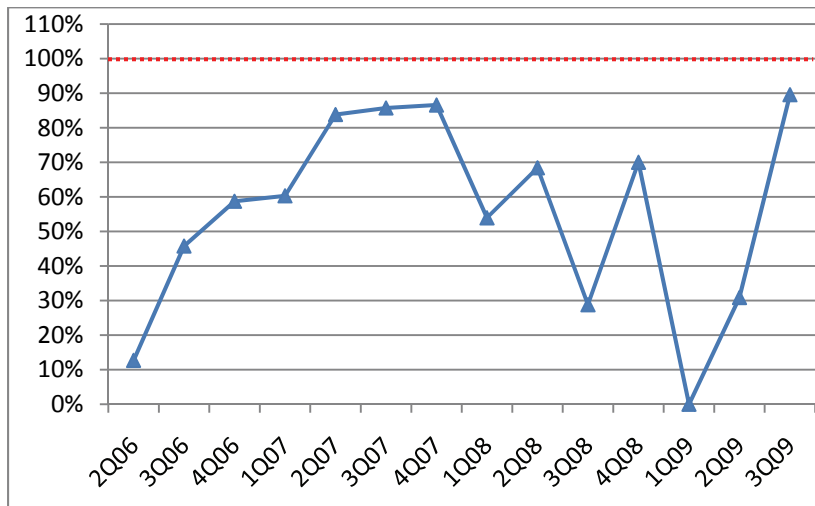
	2Q06*	3Q06*	4Q06*	1Q07	2Q07	3Q07	4Q07	1Q08	2Q08	3Q08	4Q08	1Q09	2Q09	3Q09
GPA's received	338	284	102	331	466	269	125	135	215	76	53	76	127	97
# Assigned	312	251	134	203	316	226	130	126	166	59	51	67	114	89
% Assigned	92%	88%	131%	61%	68%	84%	104%	93%	77%	78%	96%	88%	90%	92%

*2006 data includes 1200C permits administered by agents

6. How many individual NPDES major and minor permits are scheduled for reissuance in 2011?
Adherence to permit issuance plan (see #7 below)

7. How many in Question #6 have had preapplication conferences (cumulative since the beginning of the year)?
Goal is to have preapplication conferences with 100% of those scheduled for reissuances two years ahead.
BRC Focus/strategy for Wastewater permitting program, Recommendation #1

The purpose of a pre-application conference is to discuss what information DEQ has related to permit renewal (e.g. ambient water quality data) and what information will be needed from the permitted sources. At this time DEQ is providing this function through informal telephone calls, post inspection meetings with the source, formal pre-application submittal meetings and permit renewal notice letters.



	2Q06	3Q06	4Q06	1Q07	2Q07	3Q07	4Q07	1Q08	2Q08	3Q08	4Q08	1Q09	2Q09	3Q09
Permits scheduled for reissuance in 2011	63	83	63	68	68	63	67	76	76	59	50	68	68	67
# of pre-application conferences completed	8	38	37	41	57	54	58	41	52	17	35	0	21	60
% Completed	13%	46%	59%	60%	84%	86%	87%	54%	68%	29%	70%	0%	31%	90%

8. Reinigorating Program Policy Infrastructure
(**bolded** are updates from the last version)

- a) Water Quality Pollution Trading IMD (complete)
- b) Reasonable Potential Analysis IMD (complete) – (revisions to improve readability and integration with mixing zone IMD in progress)
- c) Biosolids Management IMD (complete)
- d) Annualize and simplify fee table (complete)
- e) Mixing Zone IMD (complete)
- f) Bacteria IMD (in progress)
- g) Industrial Permit Wizard (abandoned; request for reprogramming to create on-line database has been submitted)
- h) Establish Dispute Resolution process (internal draft July 2006; on hold)
- i) Use of compliance schedules in permits IMD (in progress)
- j) Fee rulemaking proposal (FY 2011) (underway)
- k) Temperature IMD (complete)
- l) Sub-surface Discharge IMD (complete)
- m) Recycled Water (Water Reuse) rule revisions (complete)
- n) Recycled Water Use IMD (April 2009)
- o) Industrial Solids IMD (in progress)
- p) Sanitary Sewer Overflow Enforcement IMD (in progress)

Future IMDs not yet scheduled:

- a) Estimating critical/low flow determinations in permits
- b) Determining appropriate monitoring conditions
- c) Documenting permit decisions
- d) Treatment of effluent dominated streams
- e) Incorporating TMDL waste load allocations into permits
- f) Implementing narrative toxics criteria in permits