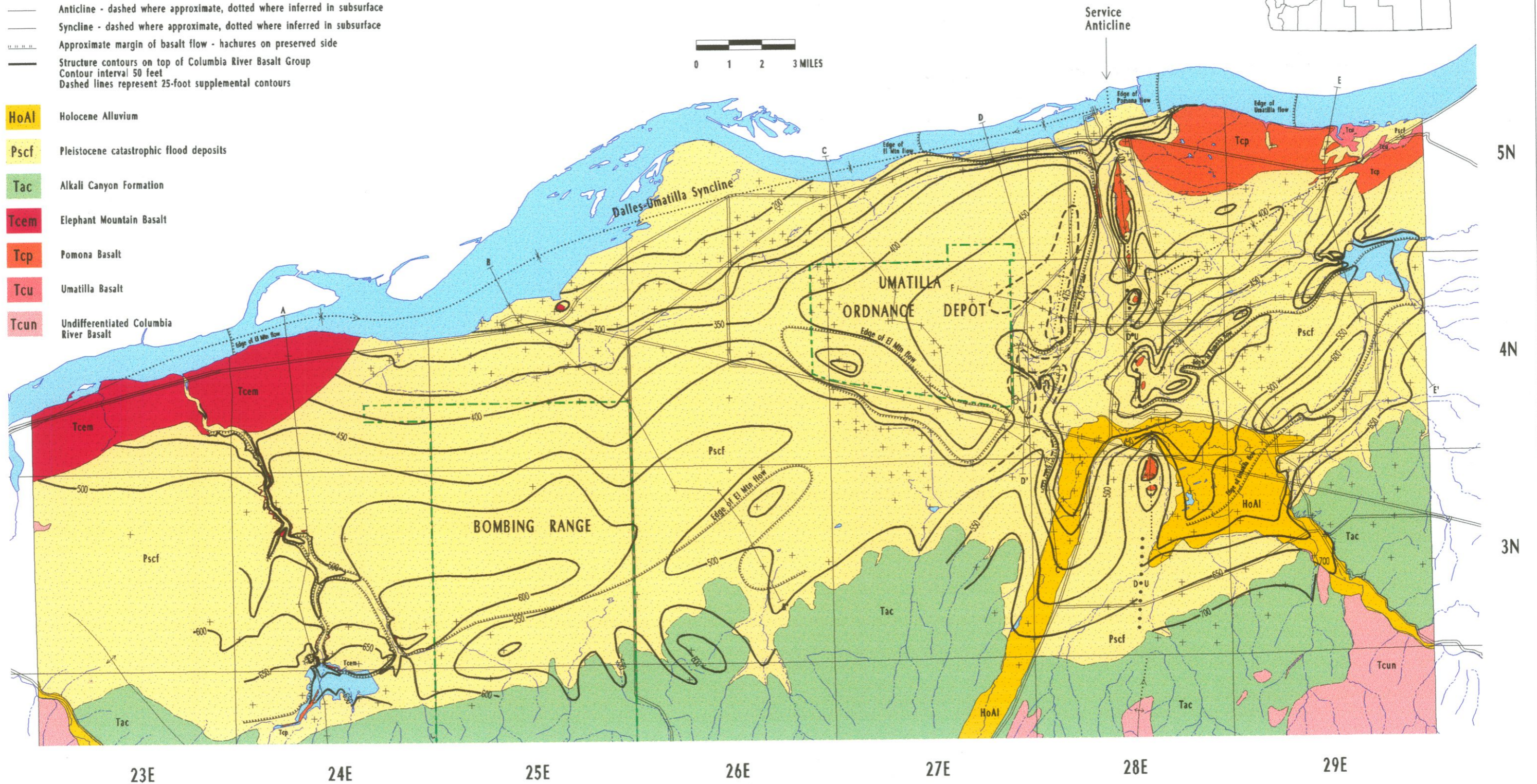


Geologic Map Showing Structure Contours on Top of the Columbia River Basalt Group

Explanation

- + Location of well used to constrain contours
- Geologic contact - dashed where approximate
- Fault - inferred location (U - Uphrown side; D - Downthrown side)
- - - - Anticline - dashed where approximate, dotted where inferred in subsurface
- - - - Syncline - dashed where approximate, dotted where inferred in subsurface
- ||| Approximate margin of basalt flow - hachures on preserved side
- Structure contours on top of Columbia River Basalt Group
Contour interval 50 feet
Dashed lines represent 25-foot supplemental contours

- HoAl** Holocene Alluvium
- Pscf** Pleistocene catastrophic flood deposits
- Tac** Alkali Canyon Formation
- Tcem** Elephant Mountain Basalt
- Tcp** Pomona Basalt
- Tcu** Umatilla Basalt
- Tcun** Undifferentiated Columbia River Basalt



•Well numbers and basalt elevations not shown at this reduced scale. Request 1:62,500 scale map for more detail.