

# ***PaintCare***

## **The Oregon Paint Stewardship Pilot Program**



### **Stakeholder Meeting**

February 9, 2010

Abby Boudouris, DEQ

Alison Keane, NPCA/FSCT

Mark Kurschner, Product Care

Mannie Cheung, Product Care

Rick Volpel, Product Care



# The Oregon Paint Stewardship Pilot Program

**1:30** Welcome and Introductions

**1:45** Paint Care Stewardship Plan Status

- Submittal status
- Review process

**2:00** Q & A

**2:15** Collection System Overview Presentation

- Collection locations
- Collection Requirements
- Process/timeline for participation

**2:45** Q & A

**3:00** Service Provider Presentations

- PSC Environmental Corp
- Portland Metro

**3:30** Q & A

**3:45** Program Evaluation

**4:15** Wrap Up/Topics for Future Meetings

- Next Meeting date: April ??, 2010 at 1:30 location TBD.



# Stewardship Plan

- PaintCare submitted Plan to DEQ on 2/1/10
- CBI Issue
- Initial Internal DEQ Review
- Public Input Process
- Approval Process
- Program Commences



# Update on Program

- Program Plan submitted to DEQ February 1, 2010 – Proposed start date of May 1, 2010
- Products
- Current Participant List
- Current Brand List
- Budget and Assessment Rate
- Proposed Collection Sites
- Transportation/Processing



# Products

## **Program Products** (maximum container size of 5 gallons):

- Interior and Exterior Paints: Latex, acrylic, water-based, alkyd, oil-based, enamel (all types of finishes and sheens, including textured coatings)
- Deck coatings and floor paints (including elastomeric)
- Waterproofing concrete/masonry/wood sealers and repellents (not-tar-based or bitumen-based)
- Melamine, metal and rust preventative
- Primers, undercoaters and sealers
- Stains and Shellacs
- Swimming Pool Paints (single component)
- Varnishes and urethanes (single component)
- Lacquers, Lacquer Sanding Sealers, and Lacquer Stains
- Wood Coatings (containing no pesticides)

## **Non-Program Products** (regardless of container size):

- Industrial Maintenance Coatings
- OEM and Industrial surface coating (shop application) paints and finishes
- Aerosol Paints
- Automotive Paints
- Marine Paints
- Craft Paints
- Caulking Compounds, epoxies, glues or adhesives
- Colorants and tints
- Resins
- Paint Thinners, mineral spirits or solvents
- Paint Additives
- Pesticide containing products
- Roof patch or repair
- Tar-based or bitumen based products
- 2-Component Coatings
- Deck Cleaners
- Traffic Coatings



# Current Participants and Brands

- List of producers (manufacturers) that have registered as participants in the program to date
  - Will be updated prior to start date
- List of brands sold in Oregon by these producers
  - Will be updated prior to start date
  - Will be updated on a periodic basis
- Lists will be on DEQ website for retailer check



# Budget and Assessment Rate

- 5 year program budget submitted
- Assessment Rate
  - \$0.00 per container <1/2 pint
  - \$0.35 per container >1/2 pint
  - \$0.75 per gallon container
  - \$1.60 per container >gallon to 5 gallon



# Proposed Collection Sites

- List of sites that have expressed interest
- Will be updated prior to start date with list of sites under contract
- Proposed to have 50% of the sites operational by start date
- 25% additional by August 1<sup>st</sup>
- Remaining proposed sites by December 31<sup>st</sup>
- Additional sites as warranted

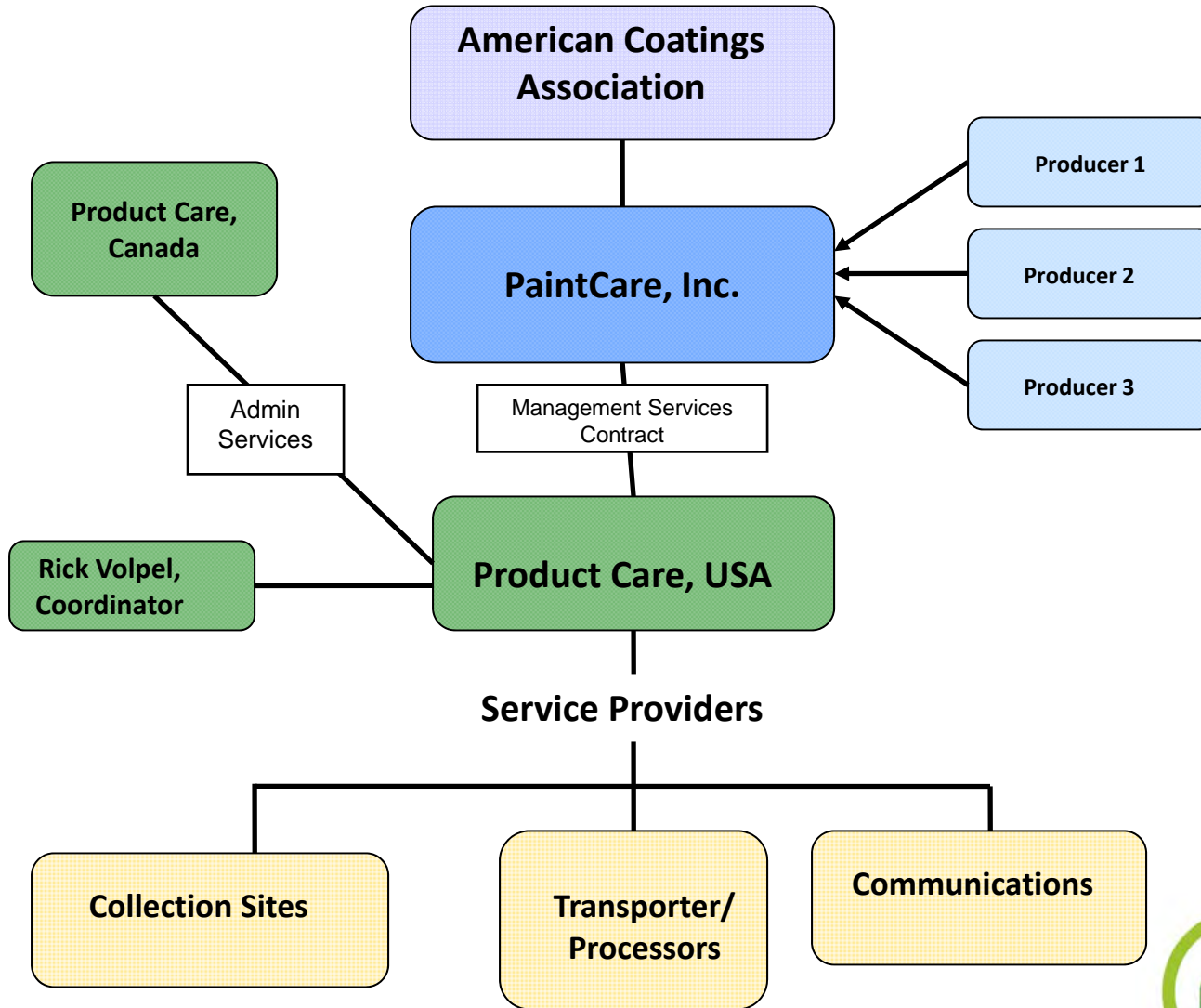


# Transportation/Processing

- Service providers selected for:
  - Transportation
  - Latex management
  - Alkyd management
- Disposition of program products
  - Reuse
  - Recycling
    - into paint
    - Into cement additive
  - Fuel Blending
  - Landfill



# Organization Chart



# Collection System Overview



# Collection System Coverage

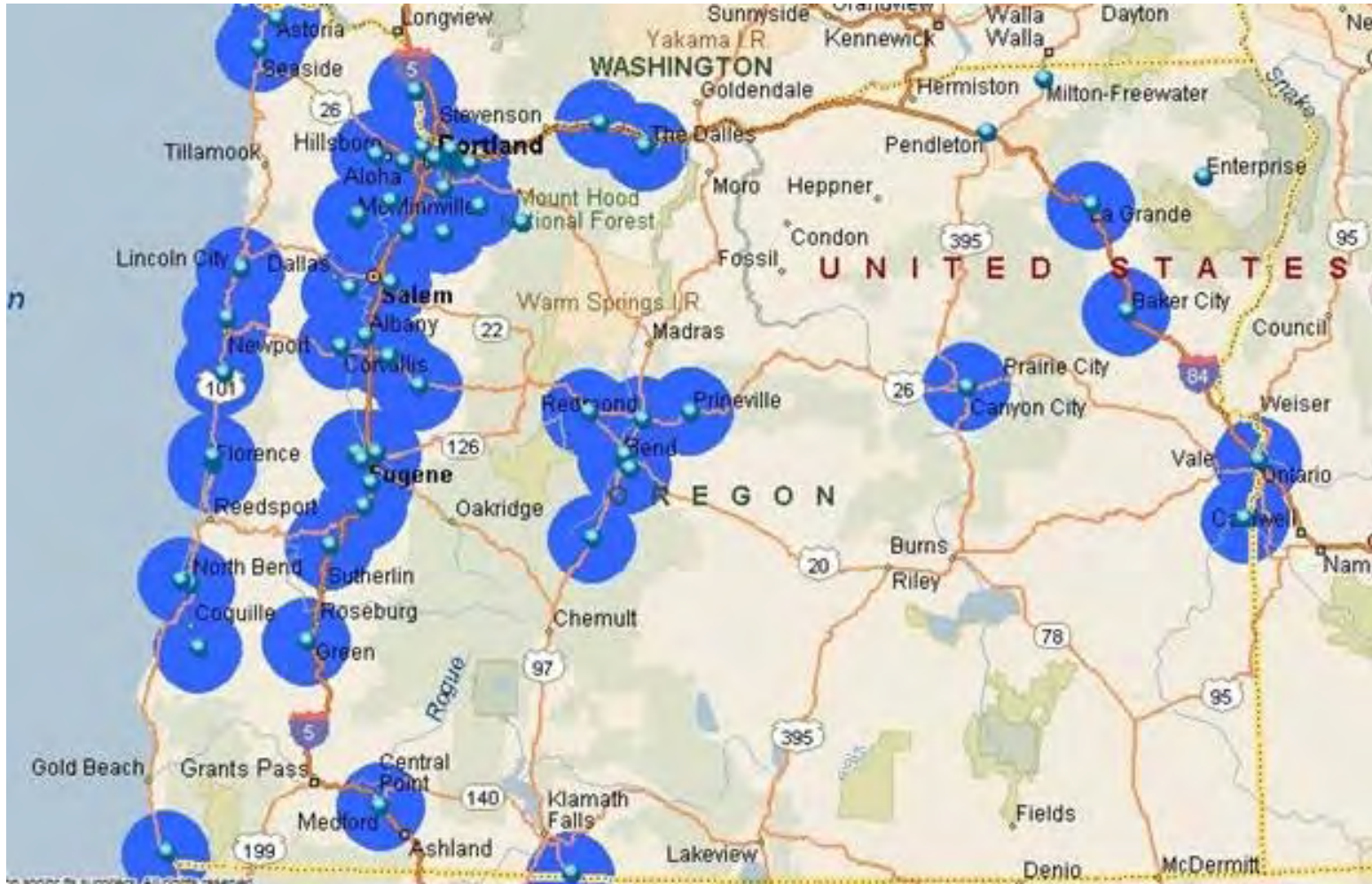
The 59 proposed collection sites will provide:

- Collection sites in 42 of 46 cities with pop >10,000 (91%)
- 161 of 241 incorporated towns and cities in Oregon with a collection site within 15 miles, (covering 93.5% of the population of Oregon residing in towns and cities)
- 25 out of 36 counties with at least 1 collection site (70%)

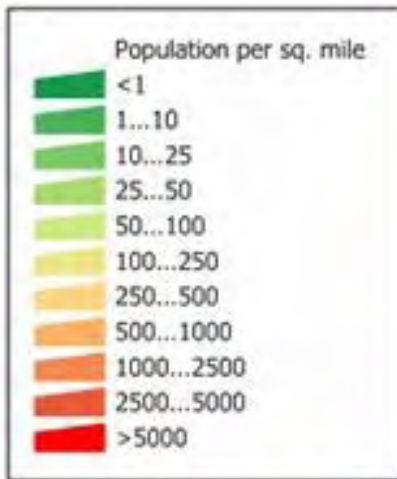
Note: 15 mile radius is a “working radius”, in most urban areas, actual distance is less



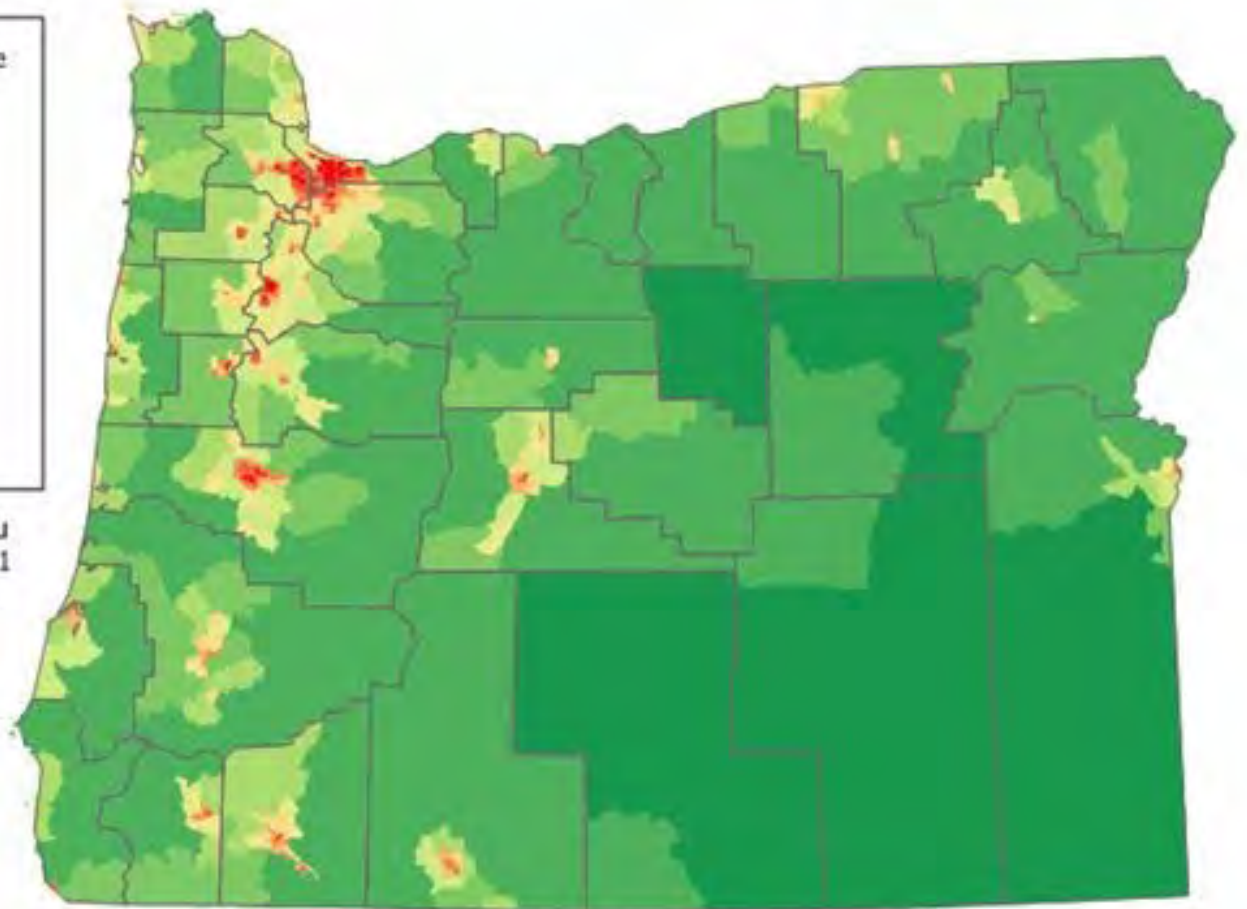
# Proposed Collection Sites (15 mile radius)



# Oregon population density



Source: U. S. Census Bureau  
Census 2000 Summary File 1  
population by census tract.



# Collection Facility Management Requirements

## Purpose:

- Minimize releases of hazardous materials into the environment
- Protect worker and public safety
- Ensure leftover paint is properly managed through reuse, recycling or proper disposal

# Collection Site Management Requirements

## Scope:

- General facility requirements
- Products acceptance criteria
- Receiving and storing
- Worker safety and training
- Emergency equipment and response
- Paint exchange

# General Facility Requirements

- Secure storage space
- Staffing
- Comply with applicable federal, state, and local laws including but not limited to:
  - Zoning requirements
  - Fire & building codes
  - OSHA requirements

# Collection System - Next Steps

- For current list of 59 sites
  - contracting,
  - training,
  - delivery of supplies
- Other potential sites - contact Rick Volpel



# Supplies and Training

Will be delivered to contracted collection sites before open for collection

- Collection site procedures
- Counter cards
- Posters identifying location as collection site
- CEG brochure/posters and screening procedure
- Spill kits
- Paint exchange waiver stickers and forms (for participating sites)
- Rick Volpel will manage training



# Collecting and Receiving

- No self serve; must be supervised
- Screening products before accepting
  - Architectural 5 gal or less, no Industrial maintenance, OEM, specialty coatings, industrial labeling
  - Refuse non program products
  - Redirect customers with non program to local county HHW or DEQ website
- CEG & household – CEG screening procedures – program plan
- Better paint for paint exchange
- Place containers directly into collection bins (latex and alkyds commingled)
- Replace collection bin cover



# Paint Exchange/Reuse Program

- Not offered at all collection sites
- No opening of containers with exception of existing HHW facilities with current procedures that allow opening containers
- Waiver form completion and volume tracking requirements



# Ordering Pickup

- Call when half capacity remains
- Call PSC at 1 800 547 2436
- Provide
  - location details,
  - # collection bins full/empty



PSC slides here



# Portland Metro Slides here



# Evaluation Slides



# Wrap Up/Next Steps

- Public Input on Plan
- Next meeting set for April.
- Agenda ideas??
- Plan Approval
- Program Rollout
- Evaluation
- Quarterly Stakeholder Meetings



# Thank you – Q&A

**Abby Boudouris, OR DEQ**

503-229-6108

[boudouris.abby@deq.state.or.us](mailto:boudouris.abby@deq.state.or.us)

**Alison Keane, PaintCare**

202-462-6272

[akeane@paint.org](mailto:akeane@paint.org)

**Mark Kurschner, Product Care Association**

877-592-2972 x 201

[mark@productcare.org](mailto:mark@productcare.org)

