

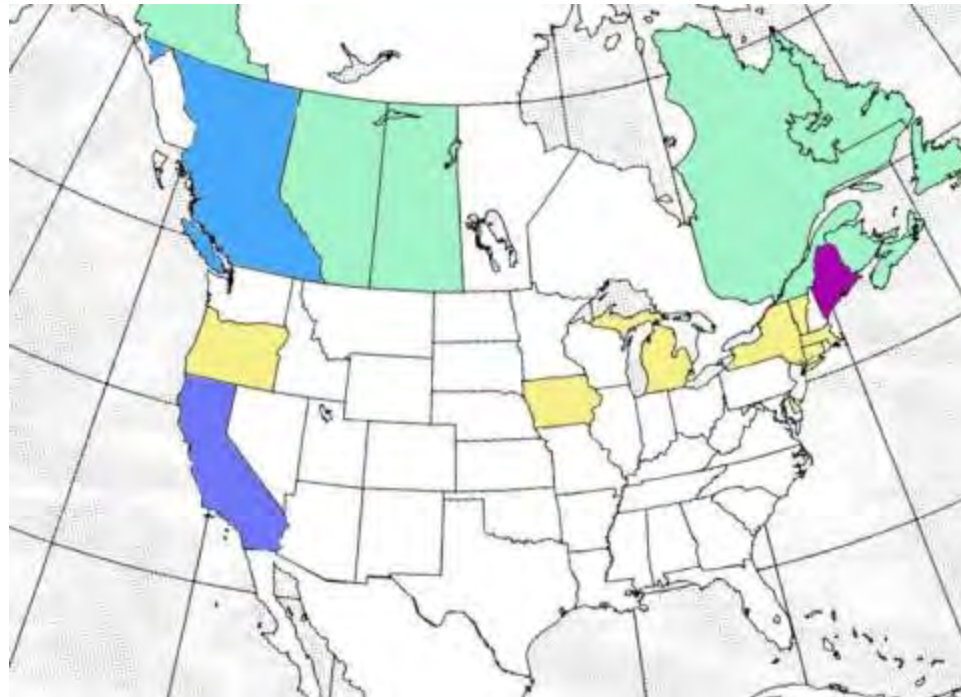


British Columbia, California, and Maine Bottle Bills

November 9, 2007

Peter Spendelow

Oregon Department of Environmental Quality





California

- **Enacted in 1986 by Legislature**
- **Updated in 2000 to include all non-alcoholic beverages except milk**
- **Redemption value went from 1 cent originally to 2.5 cents, to 4 cents, and now to 5 cents**
- **Redemption value doubled for containers larger than 24 oz**



Key Features

- **State acts as central bank for deposits, refunds**
- **No sorting by distributor for accounting purposes**
- **Each container material is supposed to pay its own way through processing fees**
- **Harder to recycle materials have higher fees, payments**
- **Most processing fees temporarily suspended due to excess revenue**

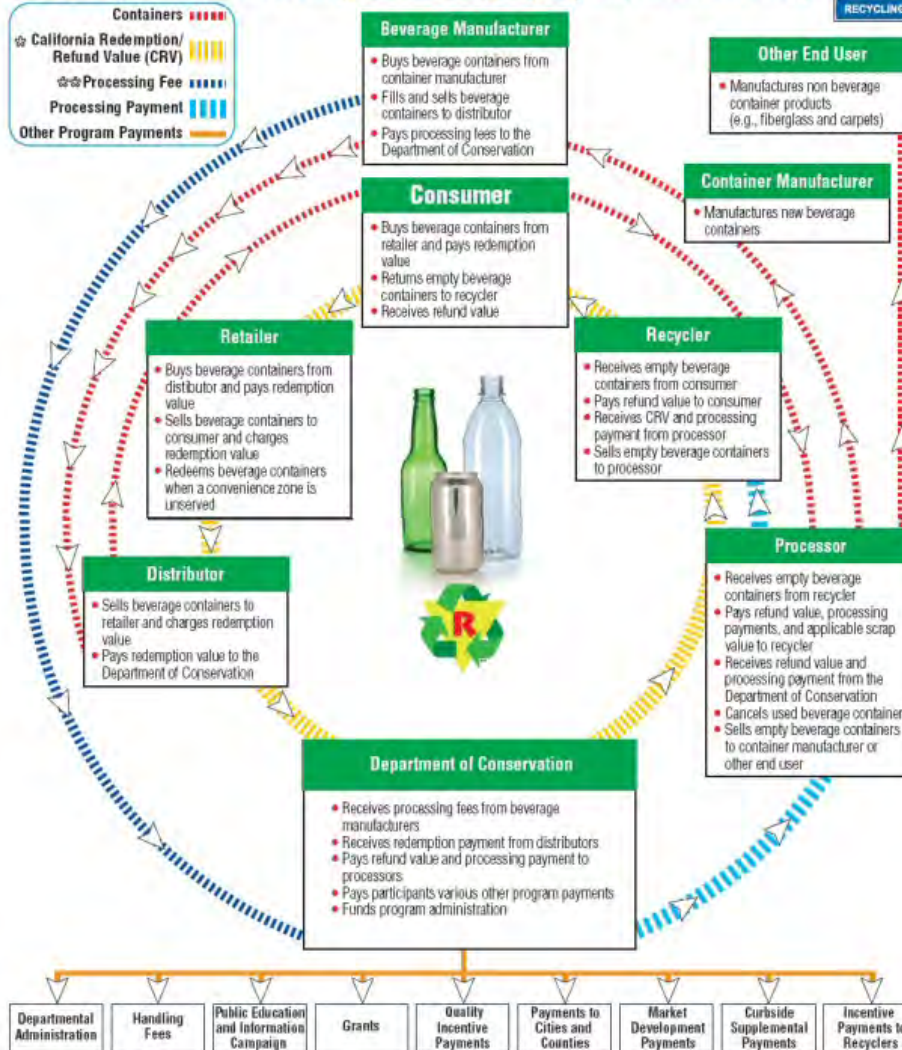


Convenience Zones

- **Area within 1/2 mile of supermarket selling more than \$2 million per year**
- **Rural convenience zones may have a 3-mile radius around supermarkets**
- **If there are no recycling centers in the convenience zone, all dealers in the zone are required to redeem containers**
- **If there is one (and only one) recycling center in a convenience zone, it might qualify for handling fees currently worth 1.8 cents per container up to \$2,300 per month**

The California Beverage Container Recycling and Litter Reduction Act

Flow of Payments under the Beverage Container Recycling Program (with Container Flow)



NOTES: ☆ California Redemption Value is paid when a beverage container is purchased. California Refund Value is received when a beverage container is returned for recycling. CRV is used to reference both terms.

☆☆ Processing payments are paid to recyclers equaling the difference between the average cost to recycle and the average scrap value received. Processing fees are equal to a percentage of processing payments ranging from 10 to 65 percent.



Redemption Options

Facility or Program Type	# Registered 2006	% of CRV 2006
Traditional Recycling Center (RC)	410	52%
Convenience Zone RC +handling fee	1251	25%
Convenience Zone RC – no handling fee	349	6%
Curbside Programs	567	14%
Collection/Dropoff/Community Service	259	3%

Tomra Convenience Zone Recycling Center



California

Most transactions are by weight in California



California



Tomra site

California

**Back side.
Tomra just
hauls the
filled boxes
away and
replaces
them with
new boxes**



California

**Very small
NexCycle
site
(not open)**



California

**Site takes
less than 2
parking
spaces and
no power
hookup
requirement**



**NexCycle
boxes in
yard show
small
battery-
operated
compaction
unit**



California

Very small site next to store. The box is for equipment and shelter. Containers are loaded into and stored in the truck



California

**Full-line
recycler.
These sites
handle the
majority of
California
containers**



California

**Limitations
on
redemption
amounts is
an anti-fraud
measure**



California

Cans can be inspected as they are conveyed up to the scale



California

**Dense
briquettes of
cans. Plastic
is in the
large yellow
box behind**



**Ming's
Recycling. A
larger full-
line recycling
center and
processor**

**Ming's also
brokers
plastic out of
Oregon**



California

**Tomra's
processing
site handles
30 Tomra
boxes per
day plus
some
materials
from others**



California

**Tomra also
operates a
regular buy-
back on their
processing
site**



California

Davis Waste Removal operates a recycling center, drop-off center, and curbside program



California

All three get
California
Redemption
Value funds.
They also are
the local
garbage
hauler





Return Rates 2005 Glass, Metal, Plastic

State/Province	Return Rate	
Oregon	82%	Includes, curbside, No water, juice
British Columbia	83%	
Maine	Unknown	Wide range of estimates
California	60%	