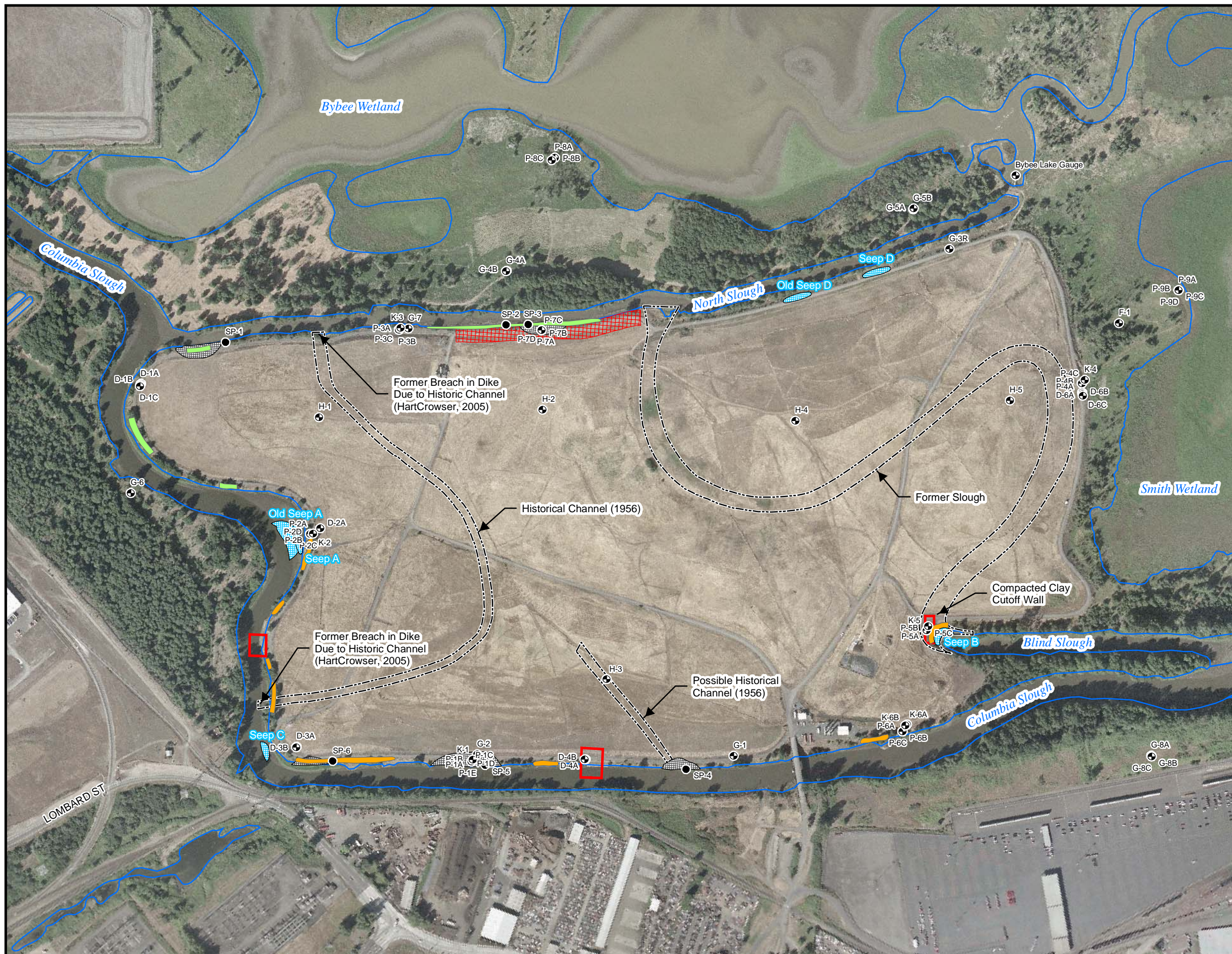


Figure 2
Monitoring Well
Locations
St. John's Landfill



Legend

- Active Well Locations
- Seep Sampling Locations (Sweet-Edwards, 1998)
- Repaired Areas (HartCrowser, 2005)
- ▨ Cutoff Wall Installed and Rim Soil Replaced (HartCrowser, 2005)
- Historic Drainage Channels (HartCrowser, 2005)
- ~ Water Feature Boundary
- Recent Seep Areas**
- HartCrowser, 1995
- Source**
- Cornforth 1991 and Metro 1994
- Cornforth 1991
- HartCrowser, 2005

