

Project: 8014.01.1703A Produced by: Hines/W. Coffey Approved by: A. Clary Print Date: 07-22-2009 File: X:\8014.01.ZRZ Realty Company\1703A\Projects\Fig4-2_Locations of Samples Completed After ROD.mxd

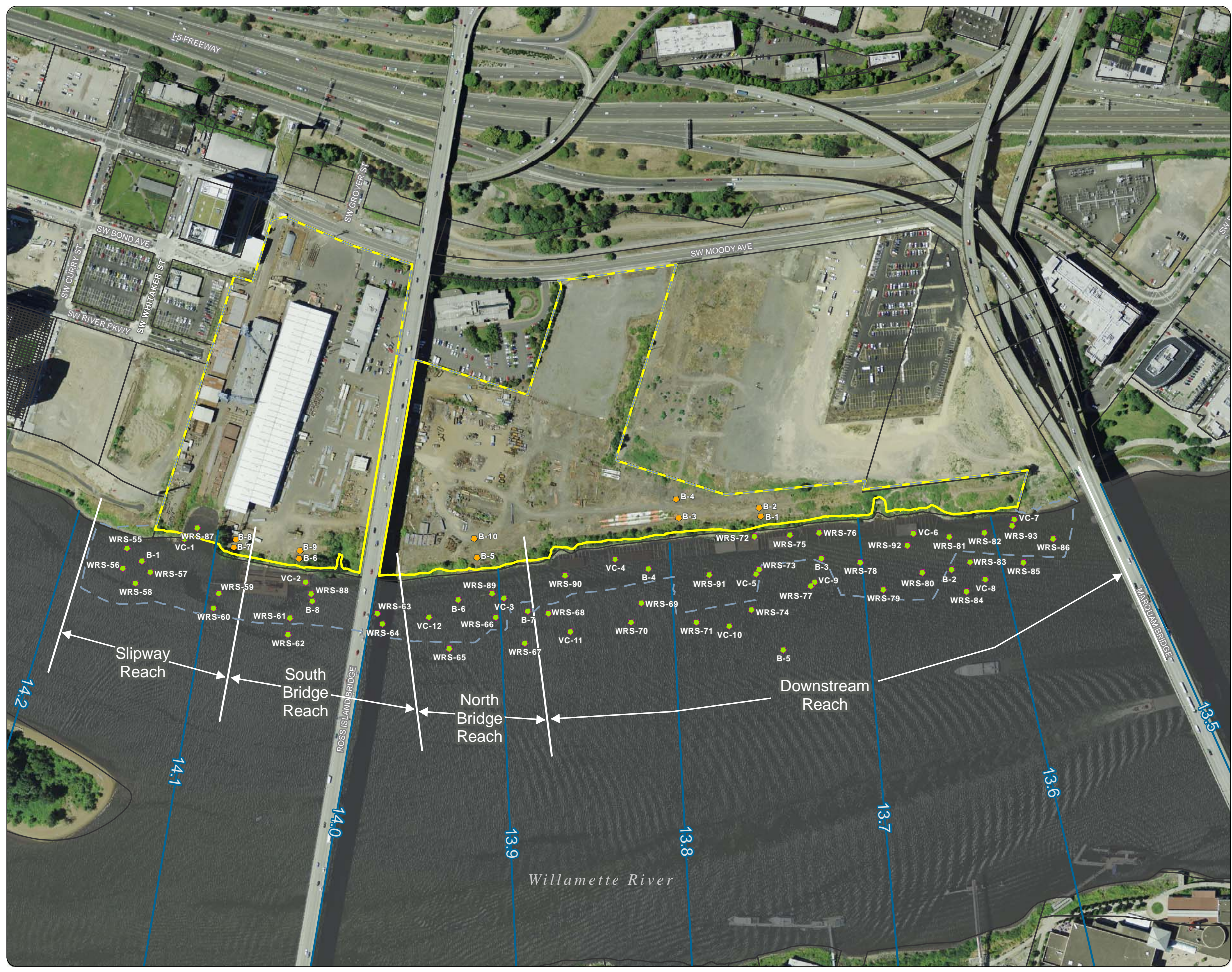


Figure 4-2
Locations of Samples
Completed After ROD

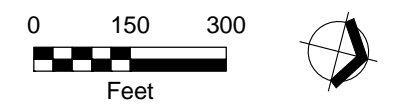
Initial Remedial Design Report
 ZRZ Realty Company
 Portland, Oregon

FOR AGENCY REVIEW ONLY
NOT FOR CONSTRUCTION

Legend

- Geotechnical Soil Boring Location (2009)
- Sediment Sample Location
- River Mile
- Site Boundary
- Zidell Property Boundary
- Tax Lot Boundary

Note:
 Geotechnical boring locations are approximate.



Source: Aerial photograph (2007) obtained from Metro Data Resource Center; property boundary obtained from survey (2007) conducted by Olson Engineering; geotechnical borings obtained from Geodesign, Inc.; river miles are based on FEMA Current Effective Model; tax lot data obtained from Metro Data Resource Center



This product is for informational purposes and may not have been prepared for, or be suitable for, legal, engineering, or surveying purposes. Users of this information should review or consult the primary data and information sources to ascertain the usability of the information.