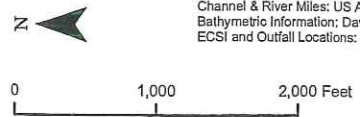


Upland (ECSI) Site	Outfalls	Bridges	Commercial
Basin Boundary	Dock Drain	Docks and Structures	Industrial
*Site/Vicinity Parcels	Roof Drain	Waterfront Taxlots	Multi Family
River Miles			Mixed Use Employment
Navigation Channel			Mixed Use Residential
River Edge + 13 ft NAVD			Parks & Open Spaces
			Rural
			Single Family

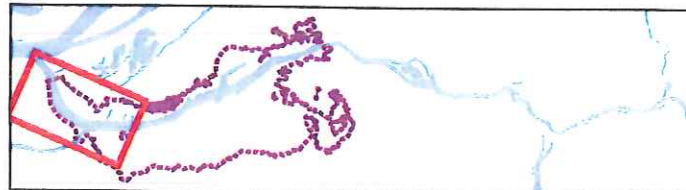
*Site/Vicinity Parcels:
Parcel ownership outlines on or in the vicinity of ECSI Sites or near the waterfront. Sites were labeled or outlined within the basin and within a mile of the river between river mile 2 and 11.

integral
consulting inc.

LWG
LOWER WILLAMETTE GROUP

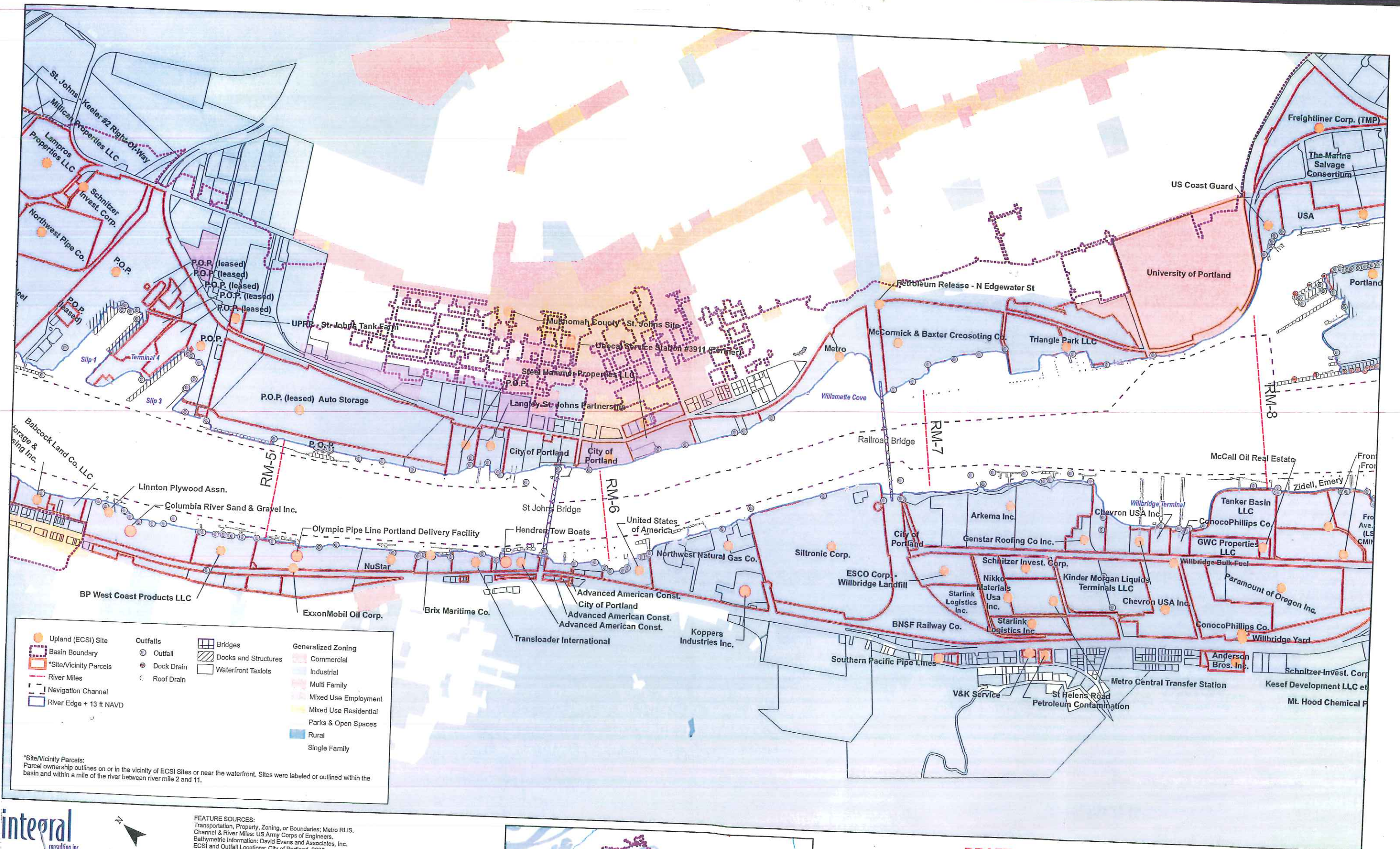


FEATURE SOURCES:
Transportation, Property, Zoning, or Boundaries: Metro RLIS.
Channel & River Miles: US Army Corps of Engineers.
Bathymetric Information: David Evans and Associates, Inc.
ECSI and Outfall Locations: City of Portland, 2008.



DRAFT
DO NOT QUOTE OR CITE
This document is currently under review by US EPA and its federal, state, and tribal partners, and is subject to change in whole or in part.

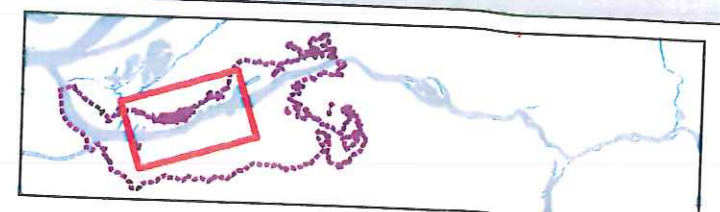
Figure 2 - a
Land Zoning and Ownership



Upland (ECSI) Site	Outfalls	Bridges	Generalized Zoning
Basin Boundary	Dock Drain	Docks and Structures	Commercial
*Site/Vicinity Parcels	Roof Drain	Waterfront Taxlots	Industrial
River Miles			Multi Family
Navigation Channel			Mixed Use Employment
River Edge + 13 ft NAVD			Mixed Use Residential
			Parks & Open Spaces
			Rural
			Single Family

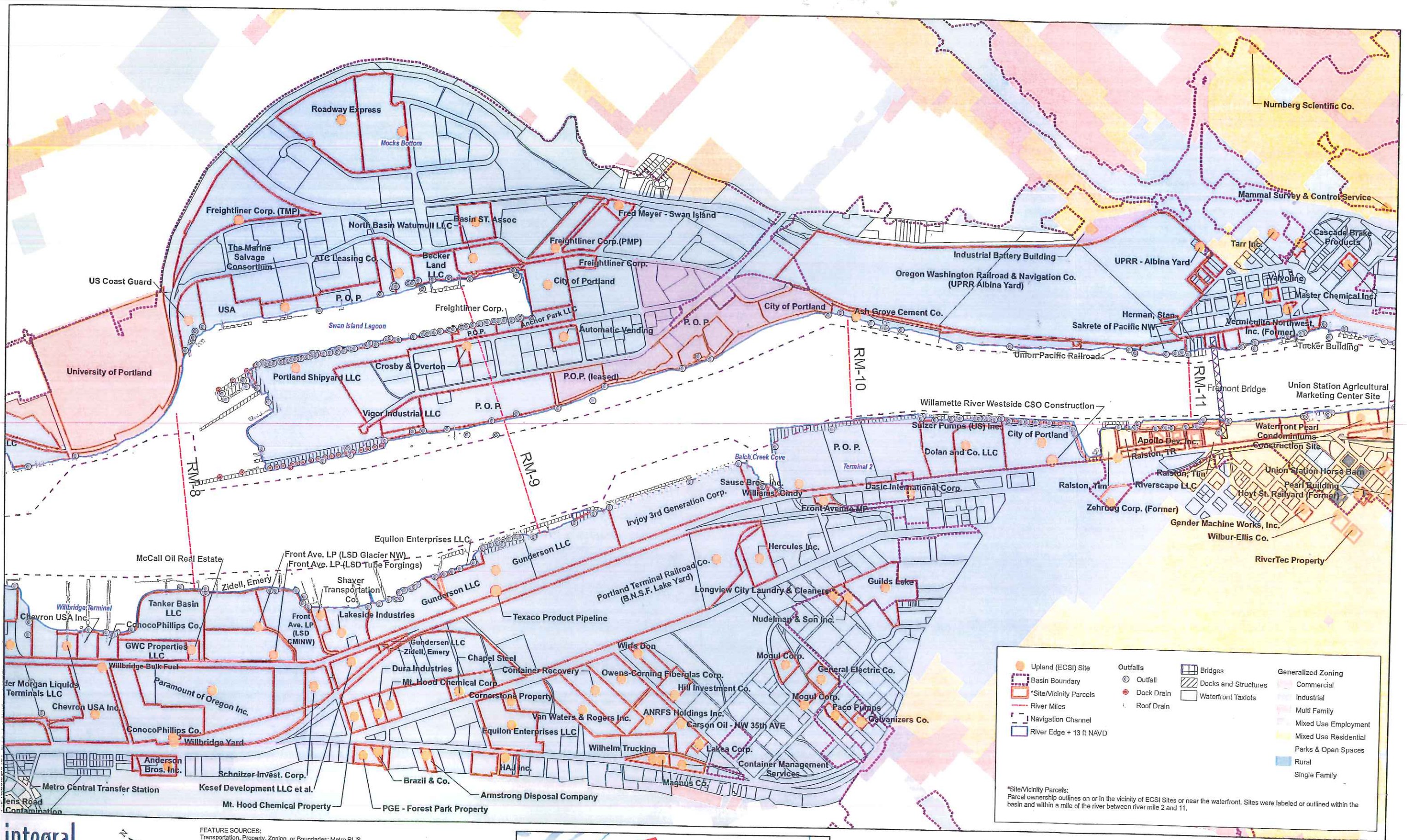
*Site/Vicinity Parcels:
Parcel ownership outlines on or in the vicinity of ECSI Sites or near the waterfront. Sites were labeled or outlined within the basin and within a mile of the river between river mile 2 and 11.

FEATURE SOURCES:
 Transportation, Property, Zoning, or Boundaries: Metro RLIS.
 Channel & River Miles: US Army Corps of Engineers.
 Bathymetric Information: David Evans and Associates, Inc.
 ECSI and Outfall Locations: City of Portland, 2008.



DRAFT
 DO NOT QUOTE OR CITE
 This document is currently under review by US EPA and its federal, state, and tribal partners, and is subject to change in whole or in part.

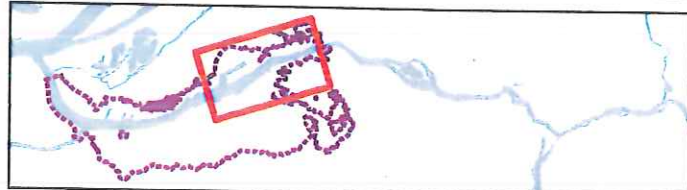
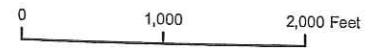
Figure 2 - b
 Land Zoning and Ownership



Upland (ECSI) Site	Outfall	Bridges	Generalized Zoning
Basin Boundary	Dock Drain	Docks and Structures	Commercial
Site/Vicinity Parcels	Roof Drain	Waterfront Taxlots	Industrial
River Miles			Multi Family
Navigation Channel			Mixed Use Employment
River Edge + 13 ft NAVD			Mixed Use Residential
			Parks & Open Spaces
			Rural
			Single Family

*Site/Vicinity Parcels: Parcel ownership outlines on or in the vicinity of ECSI Sites or near the waterfront. Sites were labeled or outlined within the basin and within a mile of the river between river mile 2 and 11.

FEATURE SOURCES:
 Transportation, Property, Zoning, or Boundaries: Metro RLIS.
 Channel & River Miles: US Army Corps of Engineers.
 Bathymetric Information: David Evans and Associates, Inc.
 ECSI and Outfall Locations: City of Portland, 2008.



DRAFT
 DO NOT QUOTE OR CITE
 This document is currently under review by US EPA and its federal, state, and tribal partners, and is subject to change in whole or in part.

Figure 2 - c
 Land Zoning and Ownership