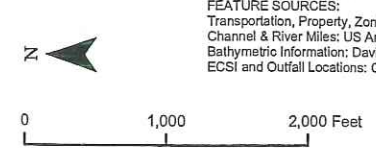


|                         |            |                      |                       |
|-------------------------|------------|----------------------|-----------------------|
| Upland (ECSI) Site      | Outfalls   | Bridges              | Commercial            |
| Basin Boundary          | Dock Drain | Docks and Structures | Industrial            |
| *Site/Vicinity Parcels  | Roof Drain | Waterfront Taxlots   | Multi Family          |
| River Miles             |            |                      | Mixed Use Employment  |
| Navigation Channel      |            |                      | Mixed Use Residential |
| River Edge + 13 ft NAVD |            |                      | Parks & Open Spaces   |
|                         |            |                      | Rural                 |
|                         |            |                      | Single Family         |

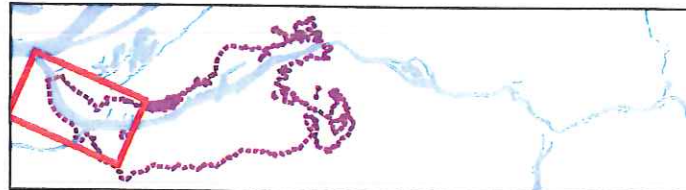
\*Site/Vicinity Parcels:  
Parcel ownership outlines on or in the vicinity of ECSI Sites or near the waterfront. Sites were labeled or outlined within the basin and within a mile of the river between river mile 2 and 11.

**integral**  
consulting inc.

**LWG**  
LOWER WILLAMETTE GROUP

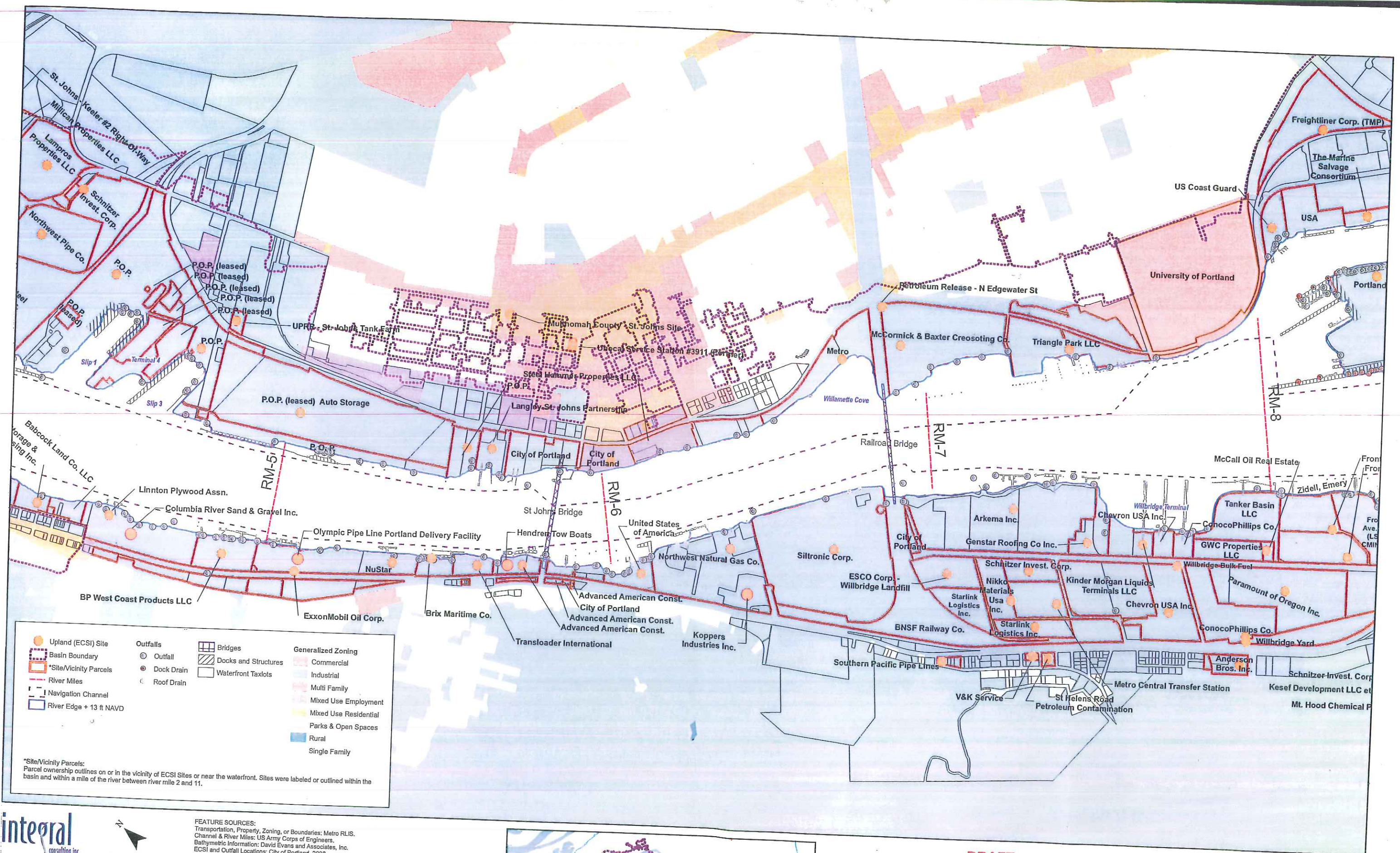


FEATURE SOURCES:  
Transportation, Property, Zoning, or Boundaries: Metro RLIS.  
Channel & River Miles: US Army Corps of Engineers.  
Bathymetric Information: David Evans and Associates, Inc.  
ECSI and Outfall Locations: City of Portland, 2008.

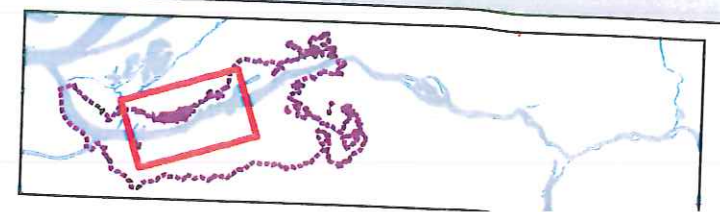


**DRAFT**  
DO NOT QUOTE OR CITE  
This document is currently under review by US EPA and its federal, state, and tribal partners, and is subject to change in whole or in part.

**Figure 2 - a**  
Land Zoning and Ownership

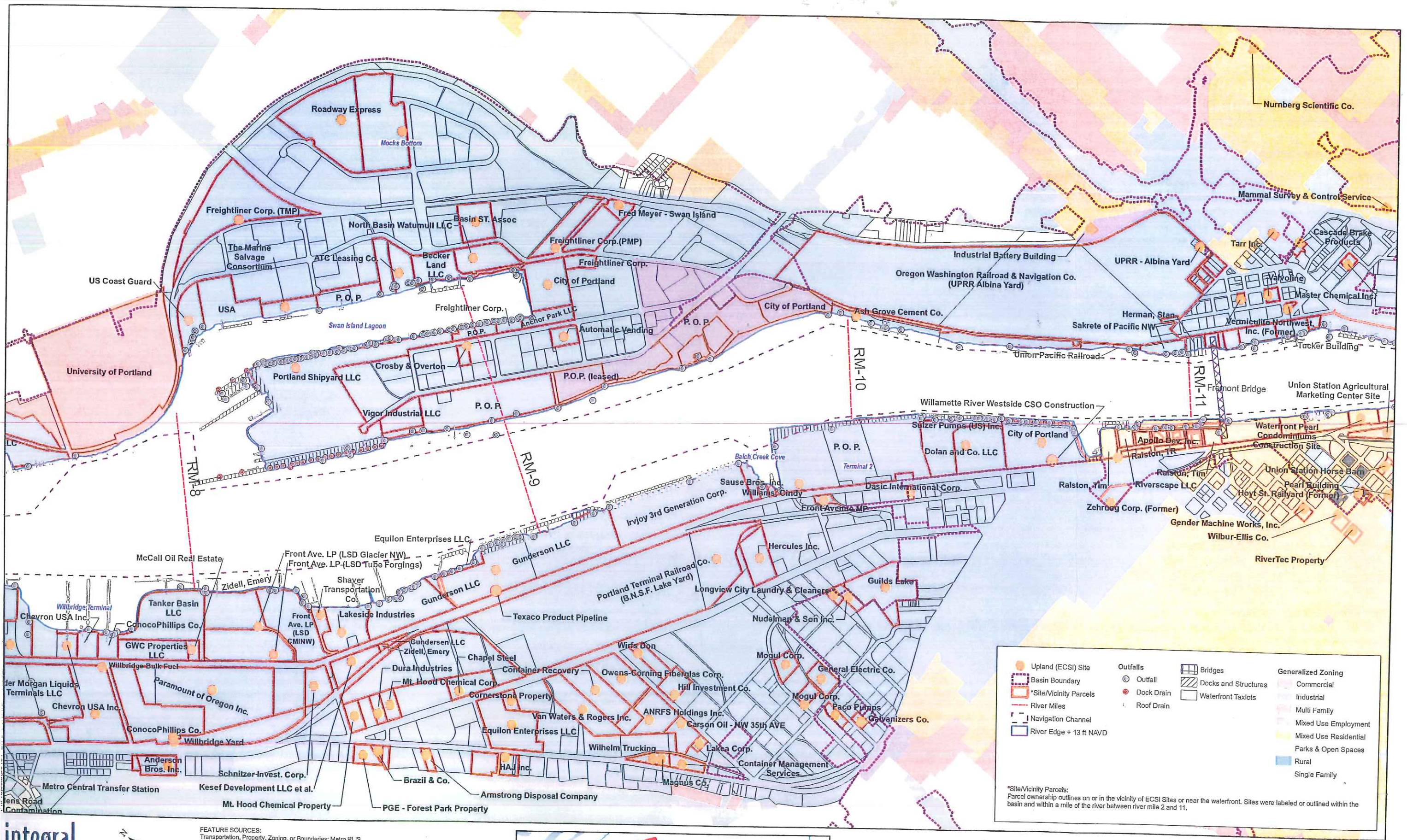


FEATURE SOURCES:  
 Transportation, Property, Zoning, or Boundaries: Metro RLIS.  
 Channel & River Miles: US Army Corps of Engineers.  
 Bathymetric Information: David Evans and Associates, Inc.  
 ECSI and Outfall Locations: City of Portland, 2008.



**DRAFT**  
 DO NOT QUOTE OR CITE  
 This document is currently under review by US EPA and its federal, state, and tribal partners, and is subject to change in whole or in part.

**Figure 2 - b**  
 Land Zoning and Ownership



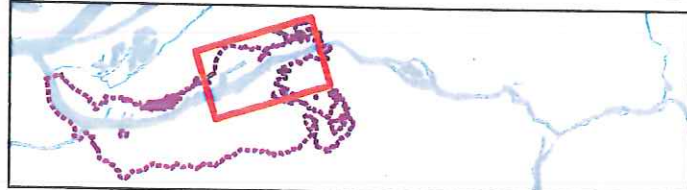
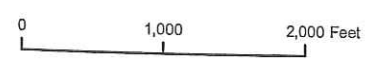
|                         |            |                      |                       |
|-------------------------|------------|----------------------|-----------------------|
| Upland (ECSI) Site      | Outfall    | Bridges              | Generalized Zoning    |
| Basin Boundary          | Dock Drain | Docks and Structures | Commercial            |
| Site/Vicinity Parcels   | Roof Drain | Waterfront Taxlots   | Industrial            |
| River Miles             |            |                      | Multi Family          |
| Navigation Channel      |            |                      | Mixed Use Employment  |
| River Edge + 13 ft NAVD |            |                      | Mixed Use Residential |
|                         |            |                      | Parks & Open Spaces   |
|                         |            |                      | Rural                 |
|                         |            |                      | Single Family         |

\*Site/Vicinity Parcels:  
Parcel ownership outlines on or in the vicinity of ECSI Sites or near the waterfront. Sites were labeled or outlined within the basin and within a mile of the river between river mile 2 and 11.

**integral**  
consulting inc.

**LWG**  
LOWER WILLAMETTE GROUP

FEATURE SOURCES:  
 Transportation, Property, Zoning, or Boundaries: Metro RLIS.  
 Channel & River Miles: US Army Corps of Engineers.  
 Bathymetric Information: David Evans and Associates, Inc.  
 ECSI and Outfall Locations: City of Portland, 2008.



**DRAFT**  
 DO NOT QUOTE OR CITE  
 This document is currently under review by US EPA and its federal, state, and tribal partners, and is subject to change in whole or in part.

**Figure 2 - c**  
 Land Zoning and Ownership