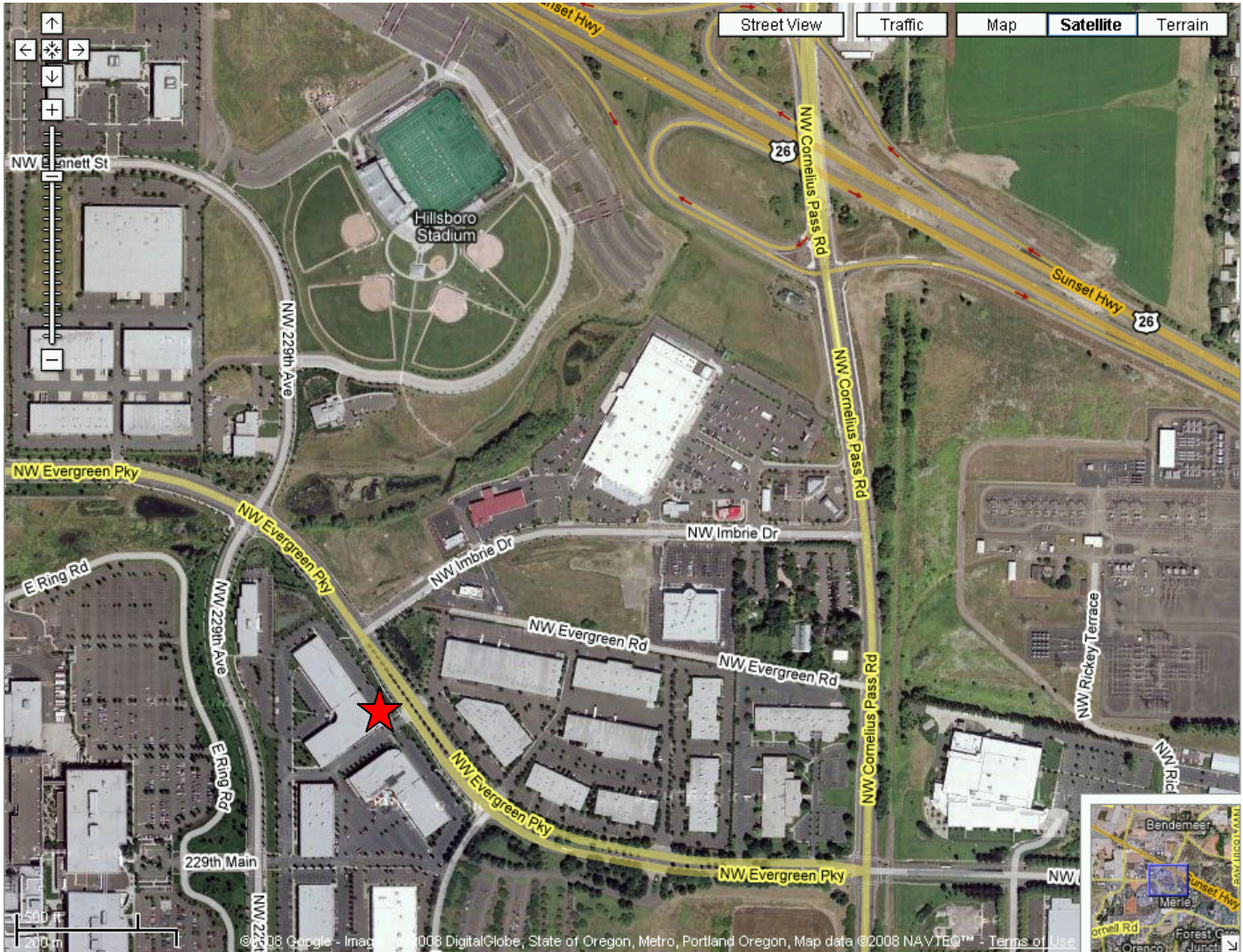


Oregon Department of Environmental Quality
Laboratory and Environmental Assessment Division (LEAD)
3150 NW 229th Ave, Suite 150
Hillsboro, OR 97124
Phone: 503-693-5700
Fax: 503-693-4999



Driving Directions from Hwy 26

- **Exit Cornelius Pass Rd. South, Exit 62-A**
- **Head South on Cornelius Pass Rd.** to traffic light at Imbrie Dr (gas station)
- **Turn Right on Imbrie Dr.**
- Follow Imbrie Dr. until it ends at NW Evergreen Pky
- **Turn Left on NW Evergreen Pky**
- Follow NW Evergreen Pky to the first driveway entrance on the right
- **Turn Right at first driveway entrance** into the DEQ LEAD parking lot
- The reception area is located at the corner of the building's two wings, immediately to your right after you enter the parking lot