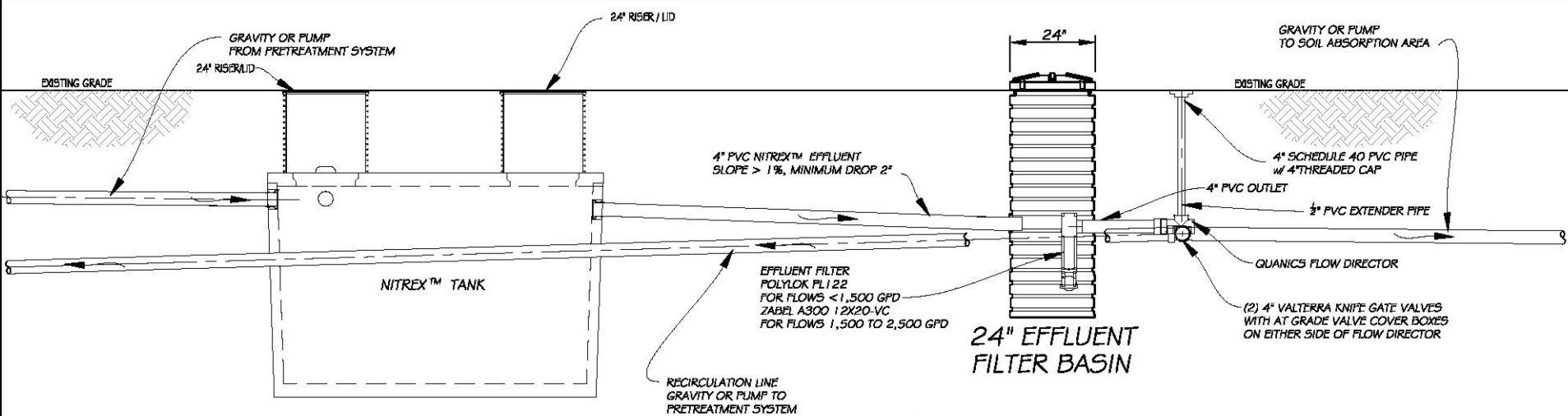


**PLAN VIEW  
NITREX™ SYSTEM**



**PROFILE VIEW  
NITREX™ SYSTEM**

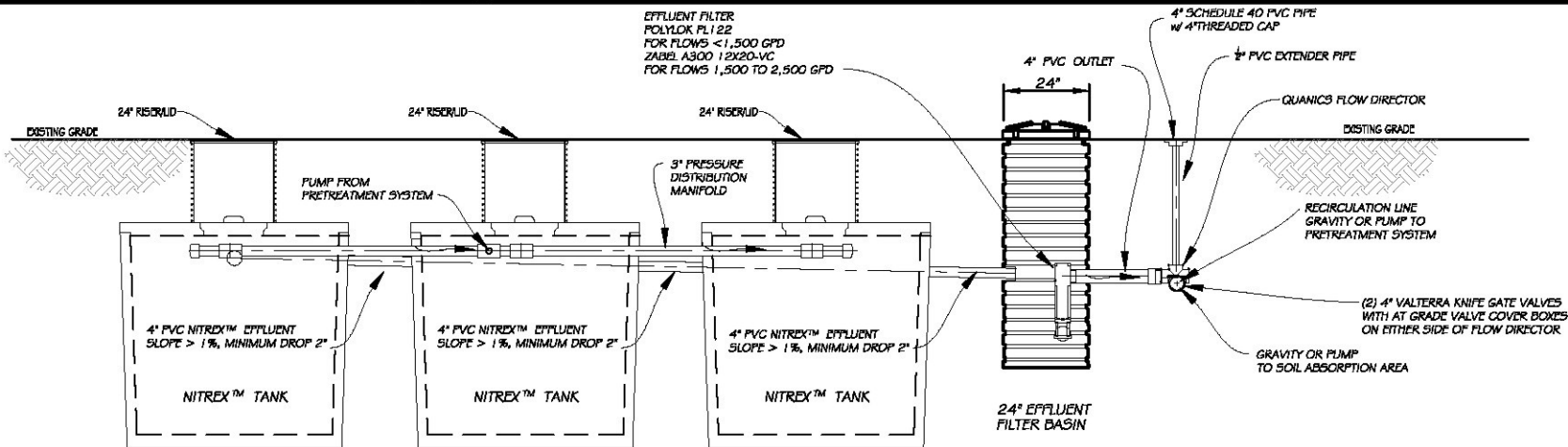
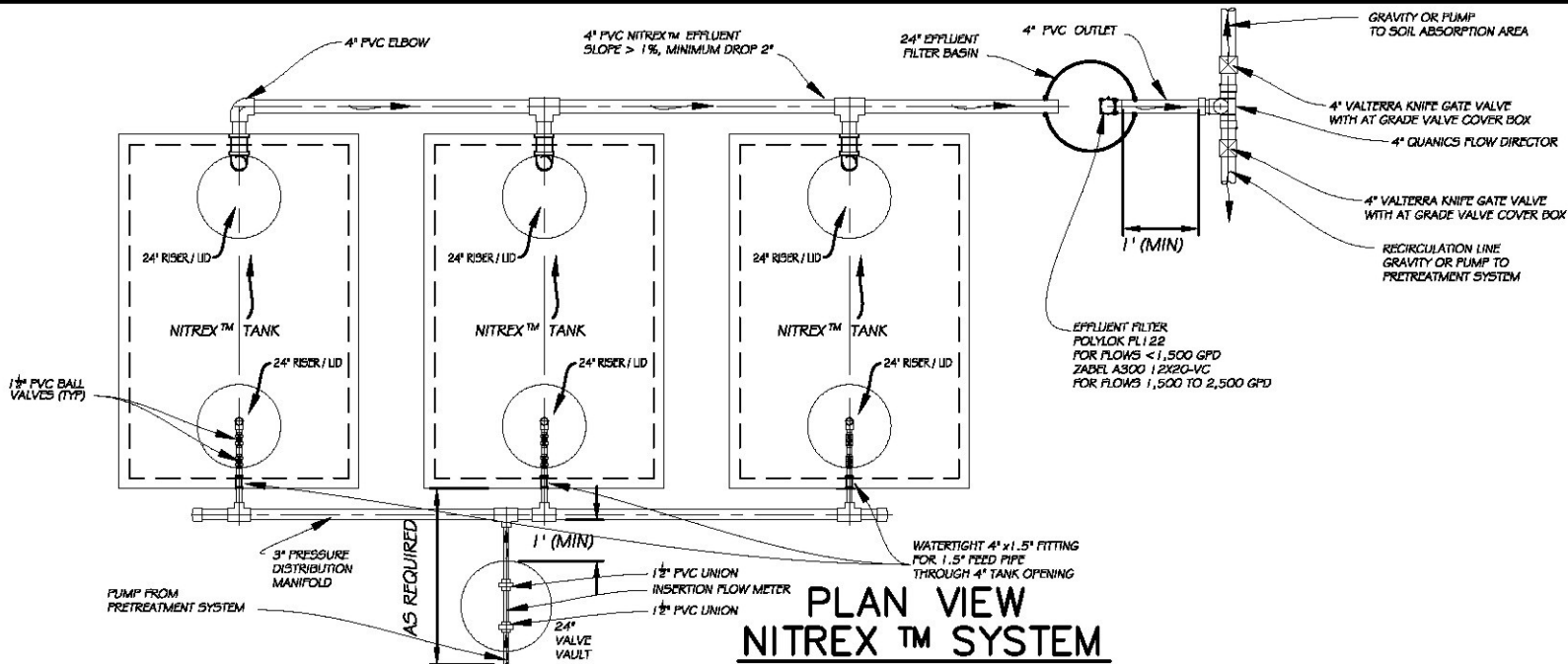
|                                 |      |    |
|---------------------------------|------|----|
| DATE: "Version 1.0", 01/29/2007 |      |    |
| DATE                            | REV. | BY |
|                                 |      |    |
|                                 |      |    |
|                                 |      |    |
|                                 |      |    |

Environmental Engineers / Consultants  
**LOMBARDO ASSOCIATES, INC.**  
 49 EDGE HILL ROAD  
 NEWTON, MA 02467  
 HTTP://WWW.LOMBARDOASSOCIATES.COM  
 EMAIL: PIO@LOMBARDOASSOCIATES.COM  
 (617) 964-2924

**NITREX™ - SINGLE TANK  
WITH EFFLUENT FILTER**

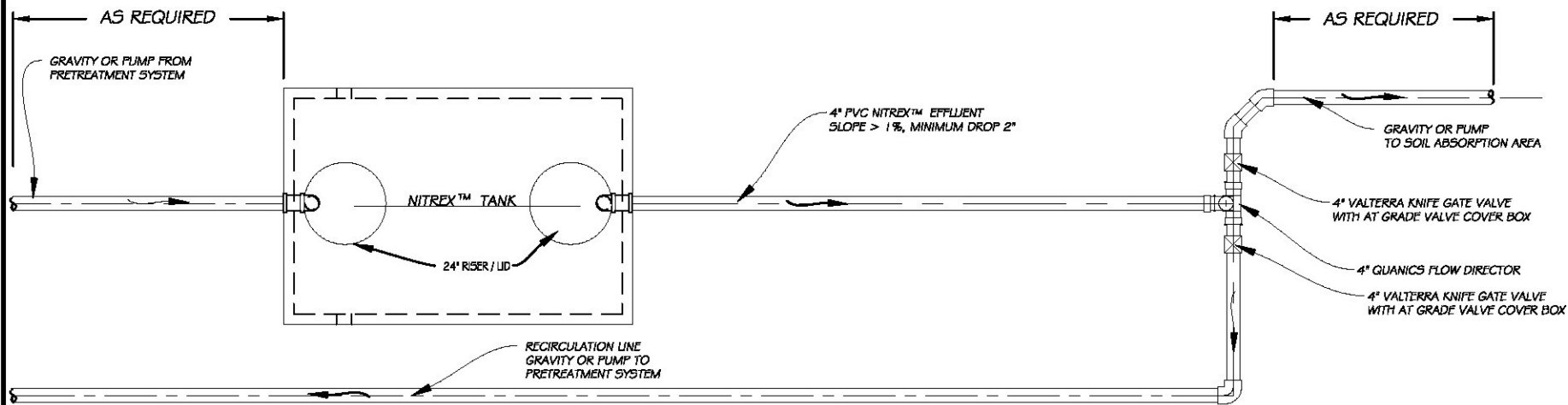
NITREX NITROGEN REMOVAL TECHNOLOGY

|                     |                  |                    |                  |
|---------------------|------------------|--------------------|------------------|
| DESIGNED BY:<br>PSL | DRAWN BY:<br>RJP | CHECKED BY:<br>PSL | SHEET:<br>1 OF 4 |
|---------------------|------------------|--------------------|------------------|

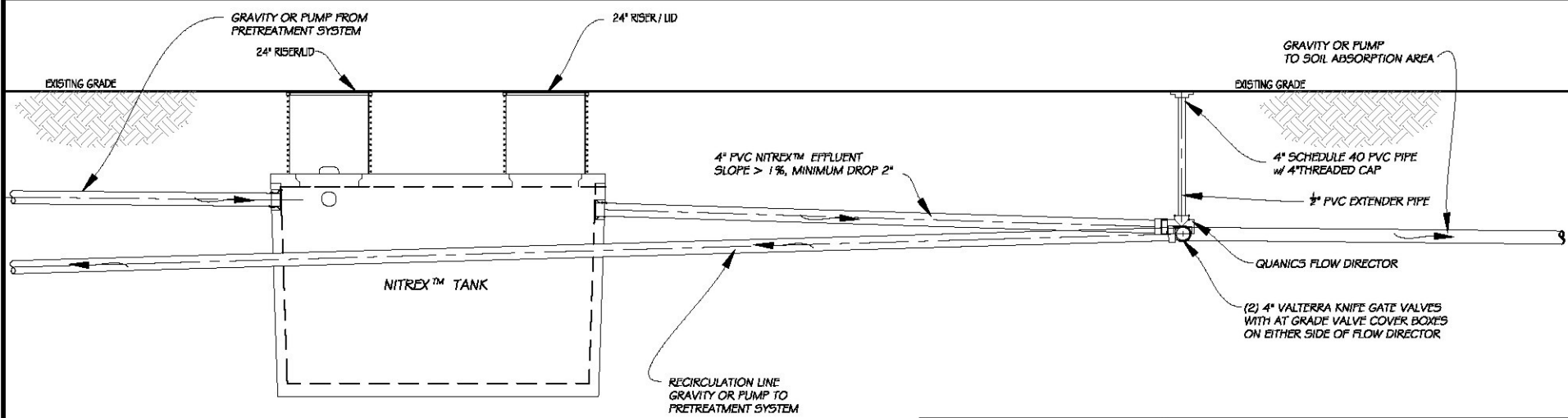


**PROFILE VIEW  
NITREX™ SYSTEM**

|  |           |             |
|--|-----------|-------------|
| Environmental Engineers / Consultants<br><b>LOMBARDO ASSOCIATES, INC.</b><br>49 EDGE HILL ROAD<br>NEWTON, MA 02467<br>HTTP://WWW.LOMBARDOASSOCIATES.COM<br>EMAIL: FIO@LOMBARDOASSOCIATES.COM<br>(617) 964-2924 |           |             |
| DATE: "Version 1.0", 01/29/2007<br>DATE: _____ REV. _____ BY _____   |           |             |
| <b>NITREX™ - MULTIPLE TANKS<br/>WITH EFFLUENT FILTER</b>   |           |             |
| <b>NITREX NITROGEN REMOVAL TECHNOLOGY</b>  |           |             |
| DESIGNED BY:   | DRAWN BY: | CHECKED BY: |
| PSL  | RJP       | PSL         |
| SHEET:   |           | 2 OF 4      |



**PLAN VIEW  
NITREX™ SYSTEM**



**PROFILE VIEW  
NITREX™ SYSTEM**

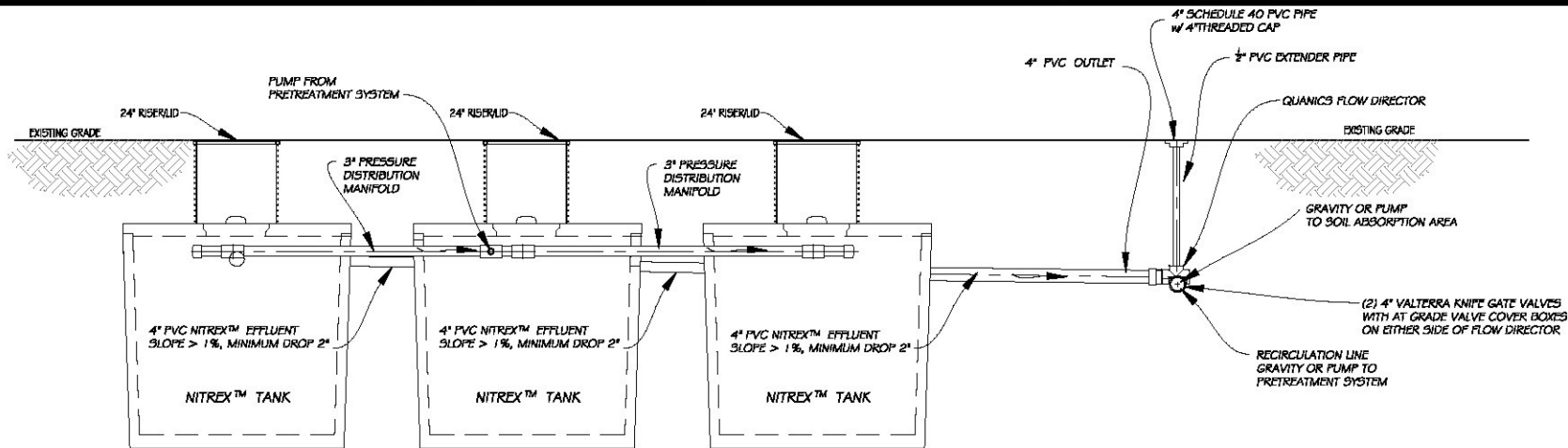
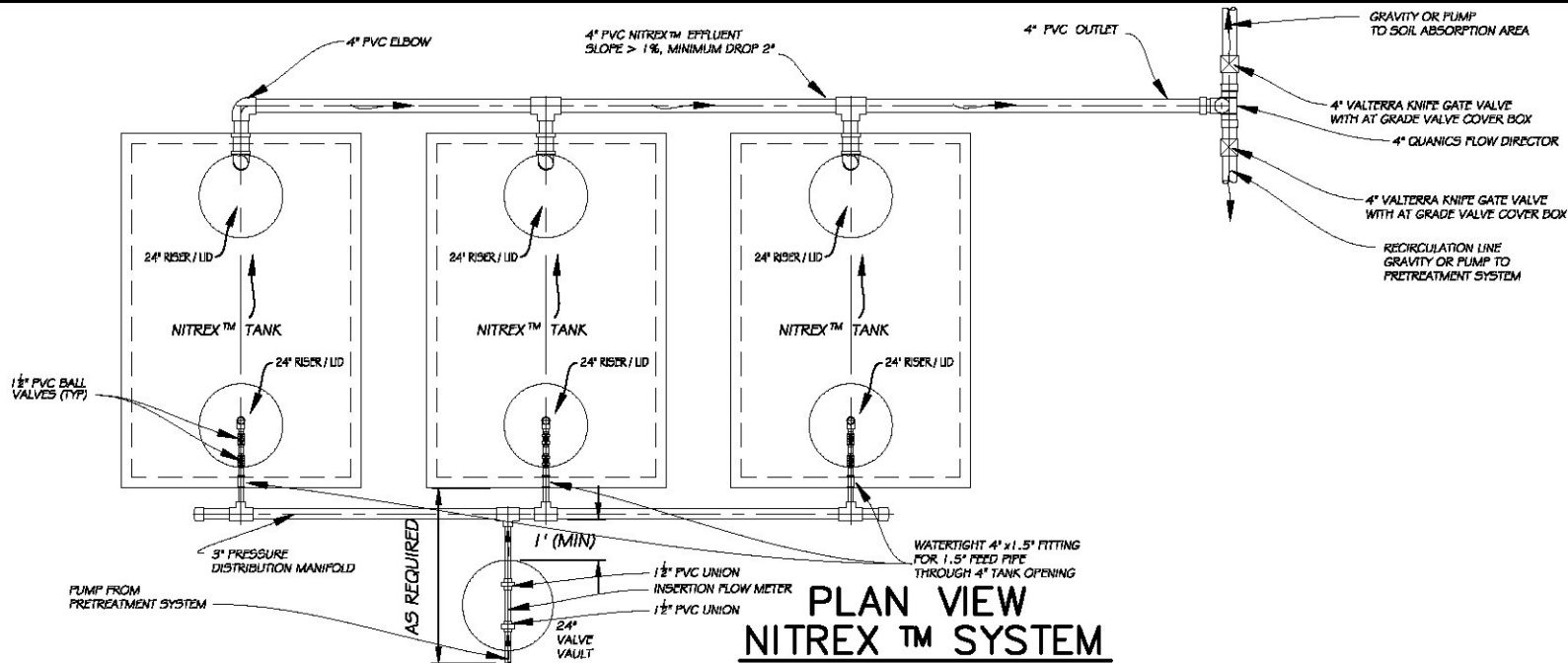
|       |           |
|-------|-----------|
| DATE: | 1/29/2007 |
| BY:   |           |
| REV.  |           |
|       |           |
|       |           |
|       |           |
|       |           |

Environmental Engineers / Consultants  
**LOMBARDO ASSOCIATES, INC.**  
 49 EDGE HILL ROAD  
 NEWTON, MA 02467  
 HTTP://WWW.LOMBARDOASSOCIATES.COM  
 EMAIL: PIO@LOMBARDOASSOCIATES.COM  
 (617) 964-2924

**NITREX™ - SINGLE TANK  
WITHOUT EFFLUENT FILTER**

**NITREX NITROGEN REMOVAL TECHNOLOGY**

|              |           |             |        |
|--------------|-----------|-------------|--------|
| DESIGNED BY: | DRAWN BY: | CHECKED BY: | SHEET: |
| PSL          | PJP       | PSL         | 3 OF 4 |



|       |                          |    |
|-------|--------------------------|----|
| DATE: | Version 1.0", 01/29/2007 |    |
| DATE  | RFV.                     | BT |
|       |                          |    |
|       |                          |    |
|       |                          |    |
|       |                          |    |

Environmental Engineers / Consultants  
**LOMBARDO ASSOCIATES, INC.**  
 49 EDGE HILL ROAD  
 NEWTON, MA 02467  
 HTTP://WWW.LOMBARDOASSOCIATES.COM  
 EMAIL: PIO@LOMBARDOASSOCIATES.COM  
 (617) 964-2924

**NITREX™ - MULTIPLE TANKS  
WITHOUT EFFLUENT FILTER**

NITREX NITROGEN REMOVAL TECHNOLOGY

|                     |                  |                    |                  |
|---------------------|------------------|--------------------|------------------|
| DESIGNED BY:<br>PSL | DRAWN BY:<br>PJP | CHECKED BY:<br>PSL | SHEET:<br>4 OF 4 |
|---------------------|------------------|--------------------|------------------|